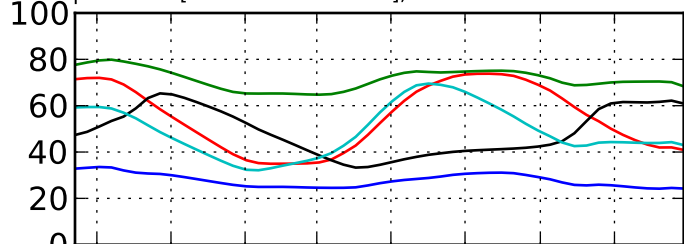
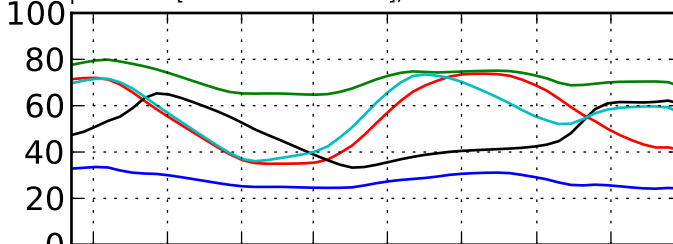


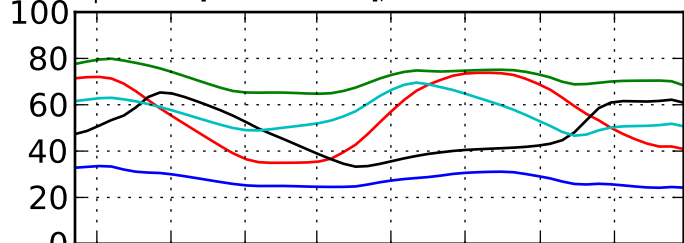
Temp Series : [ 2. 5. 7. 1. 14.], erreur Mk 0 = 318.527753025



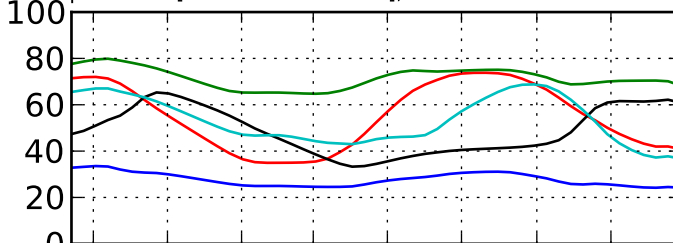
Temp Series : [ 2. 5. 7. 1. 16.], erreur Mk 1 = 342.280570902



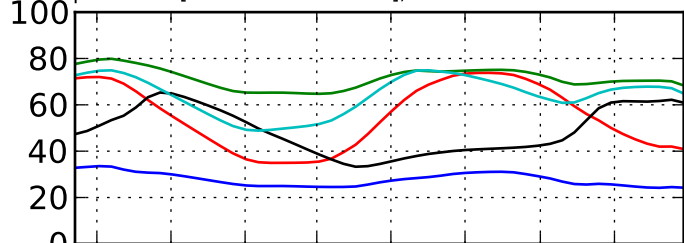
Temp Series : [ 2. 5. 7. 1. 6.], erreur Mk 2 = 342.852566006



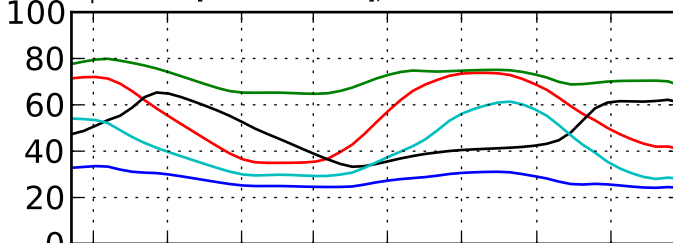
Temp Series : [ 2. 5. 7. 1. 12.], erreur Mk 3 = 344.146851715



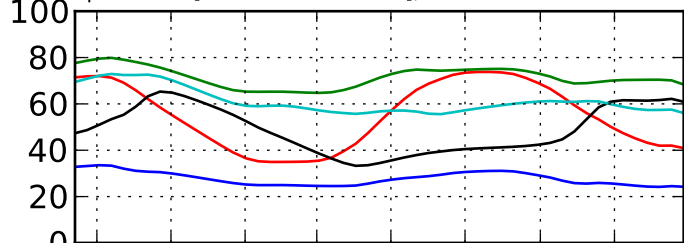
Temp Series : [ 2. 5. 7. 1. 15.], erreur Mk 4 = 357.686110153



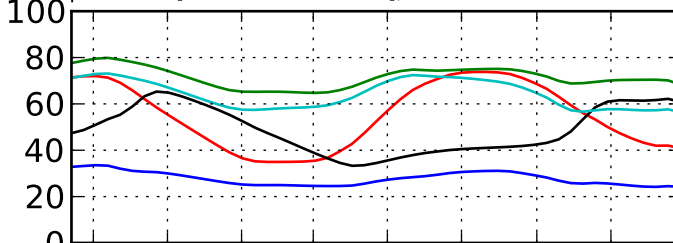
Temp Series : [ 2. 5. 7. 1. 4.], erreur Mk 5 = 362.818848078



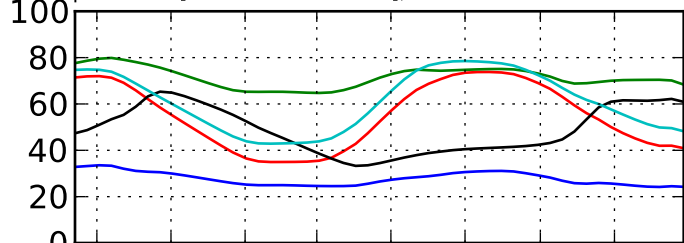
Temp Series : [ 2. 5. 7. 1. 17.], erreur Mk 6 = 364.0158515



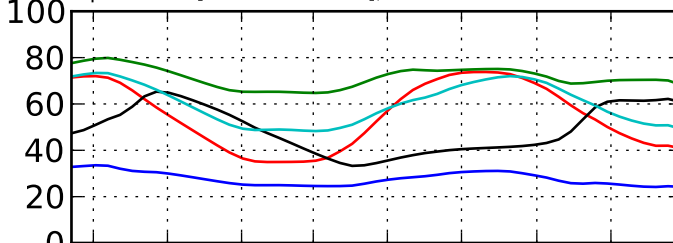
Temp Series : [ 2. 5. 7. 1. 13.], erreur Mk 7 = 364.862320147



Temp Series : [ 2. 5. 7. 1. 10.], erreur Mk 8 = 368.303811824



Temp Series : [ 2. 5. 7. 1. 9.], erreur Mk 9 = 368.320854287



sept. 2008  
nov. 2008  
janv. 2009  
mars 2009  
mai 2009  
juil. 2009  
sept. 2009  
nov. 2009

Dates

sept. 2008  
nov. 2008  
janv. 2009  
mars 2009  
mai 2009  
juil. 2009  
sept. 2009  
nov. 2009

Dates