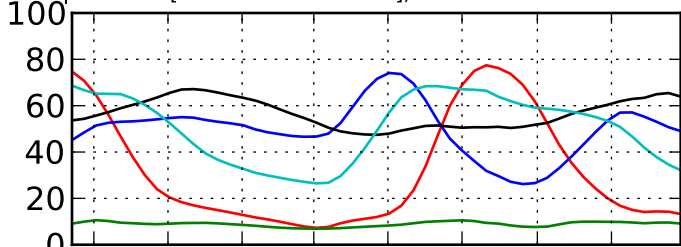
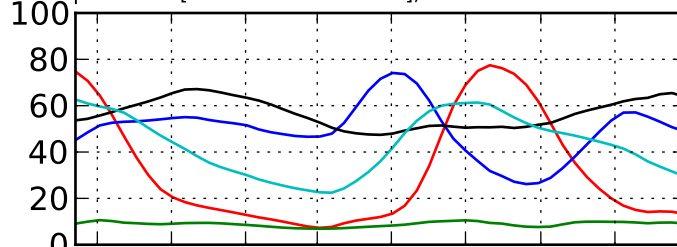


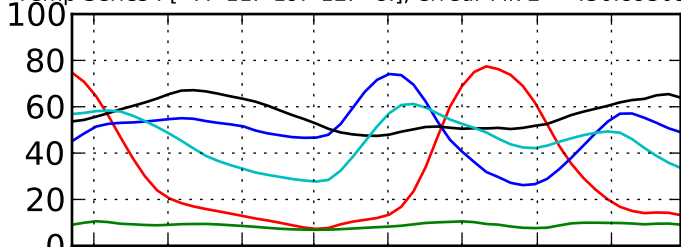
Temp Series : [7. 11. 19. 12. 9.], erreur Mk 0 = 400.483804725



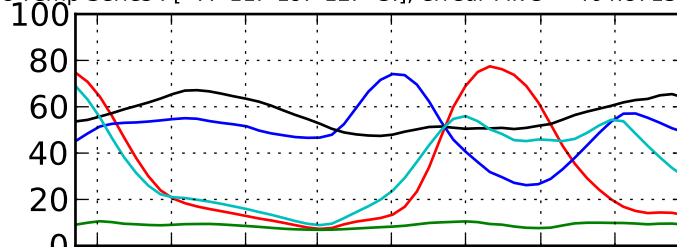
Temp Series : [7. 11. 19. 12. 5.], erreur Mk 1 = 419.63820074



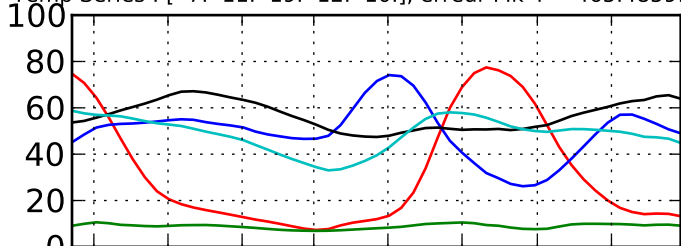
Temp Series : [7. 11. 19. 12. 8.], erreur Mk 2 = 436.893098828



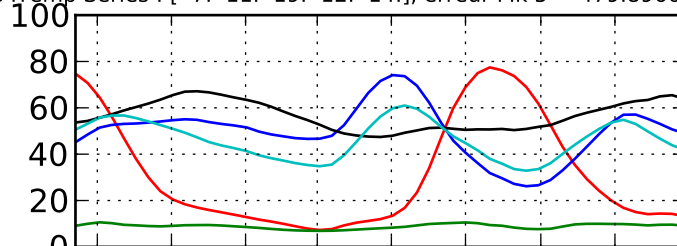
Temp Series : [7. 11. 19. 12. 3.], erreur Mk 3 = 464.871372543



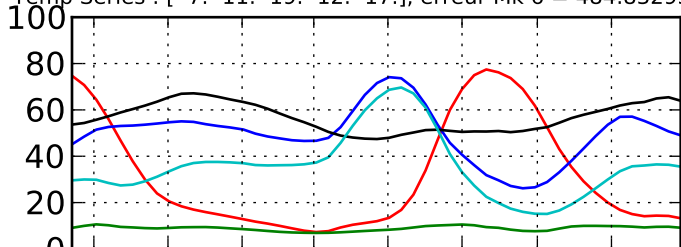
Temp Series : [7. 11. 19. 12. 10.], erreur Mk 4 = 465.485914664



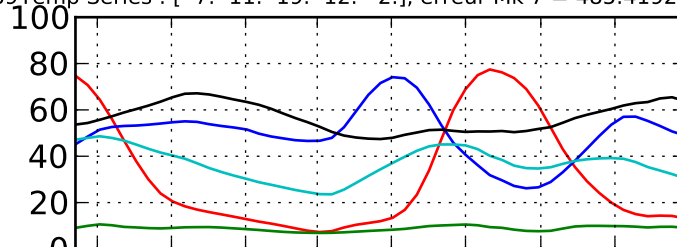
Temp Series : [7. 11. 19. 12. 14.], erreur Mk 5 = 479.896627751



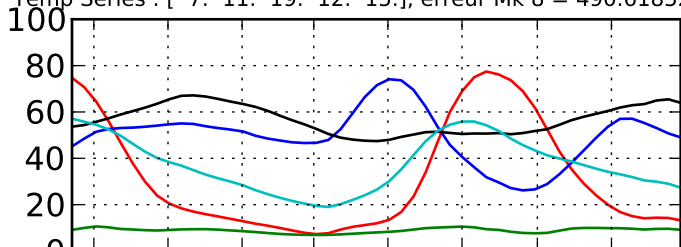
Temp Series : [7. 11. 19. 12. 17.], erreur Mk 6 = 484.832934389



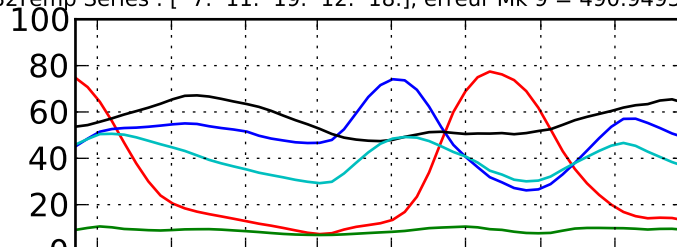
Temp Series : [7. 11. 19. 12. 2.], erreur Mk 7 = 485.419297644



Temp Series : [7. 11. 19. 12. 15.], erreur Mk 8 = 490.618525882



Temp Series : [7. 11. 19. 12. 18.], erreur Mk 9 = 490.949386601



sept. 2004
nov. 2004
janv. 2005
mars 2005
mai 2005
juil. 2005
sept. 2005
nov. 2005

Dates

sept. 2004
nov. 2004
janv. 2005
mars 2005
mai 2005
juil. 2005
sept. 2005
nov. 2005

Dates