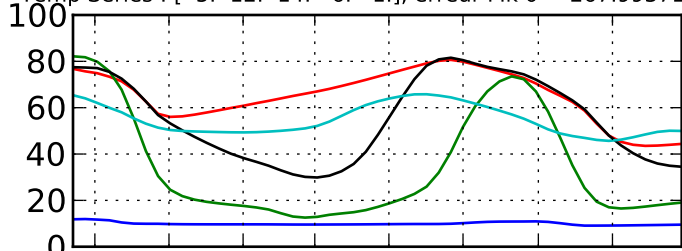
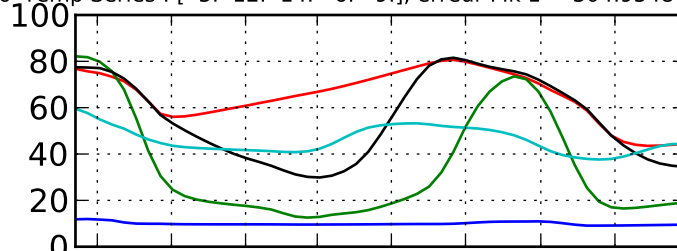


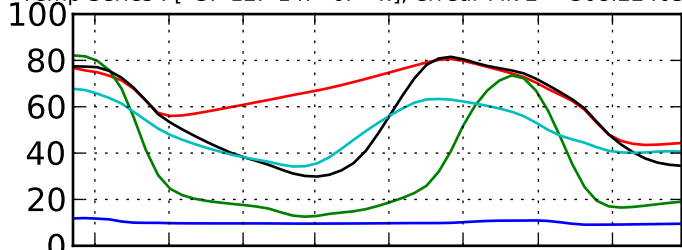
Temp Series : [ 5. 12. 14. 6. 1.], erreur Mk 0 = 267.993716766



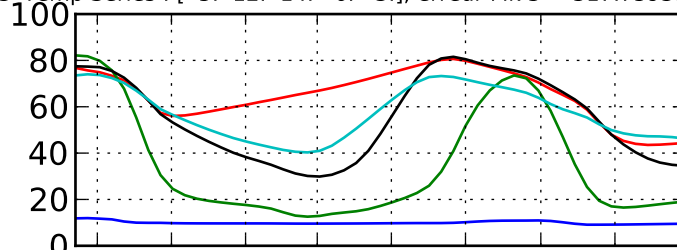
Temp Series : [ 5. 12. 14. 6. 9.], erreur Mk 1 = 304.954803437



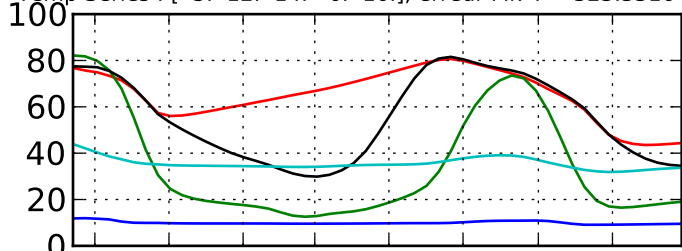
Temp Series : [ 5. 12. 14. 6. 4.], erreur Mk 2 = 308.224054133



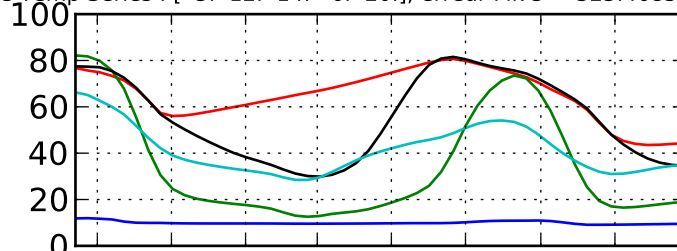
Temp Series : [ 5. 12. 14. 6. 3.], erreur Mk 3 = 317.759315437



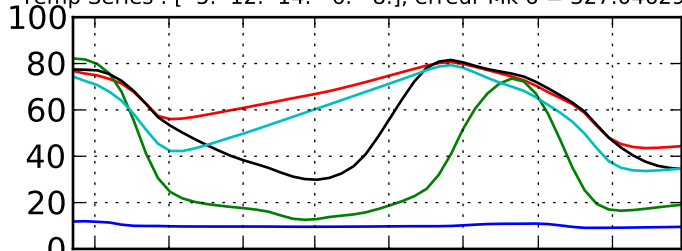
Temp Series : [ 5. 12. 14. 6. 16.], erreur Mk 4 = 323.331646365



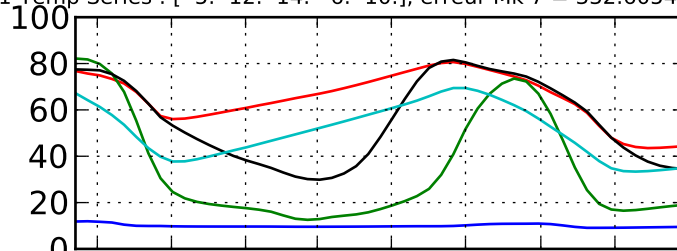
Temp Series : [ 5. 12. 14. 6. 20.], erreur Mk 5 = 325.468544567



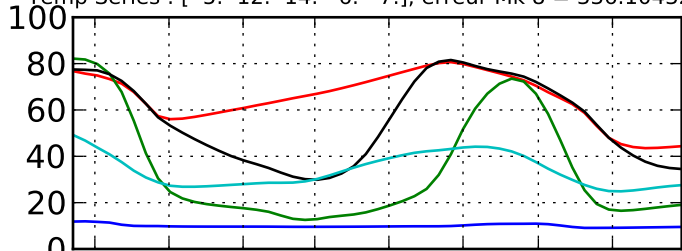
Temp Series : [ 5. 12. 14. 6. 8.], erreur Mk 6 = 327.046290641



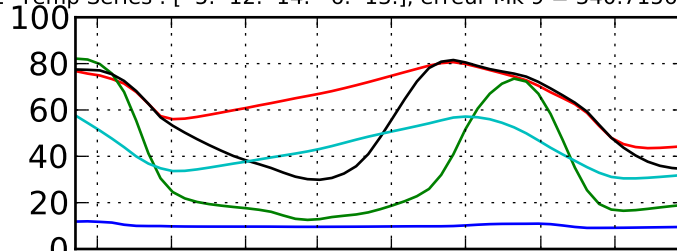
Temp Series : [ 5. 12. 14. 6. 10.], erreur Mk 7 = 332.605435974



Temp Series : [ 5. 12. 14. 6. 7.], erreur Mk 8 = 336.10432821



Temp Series : [ 5. 12. 14. 6. 13.], erreur Mk 9 = 340.715670869



sept. 2008  
nov. 2008  
janv. 2009  
mars 2009  
mai 2009  
juil. 2009  
sept. 2009  
nov. 2009

Dates

sept. 2008  
nov. 2008  
janv. 2009  
mars 2009  
mai 2009  
juil. 2009  
sept. 2009  
nov. 2009

Dates