

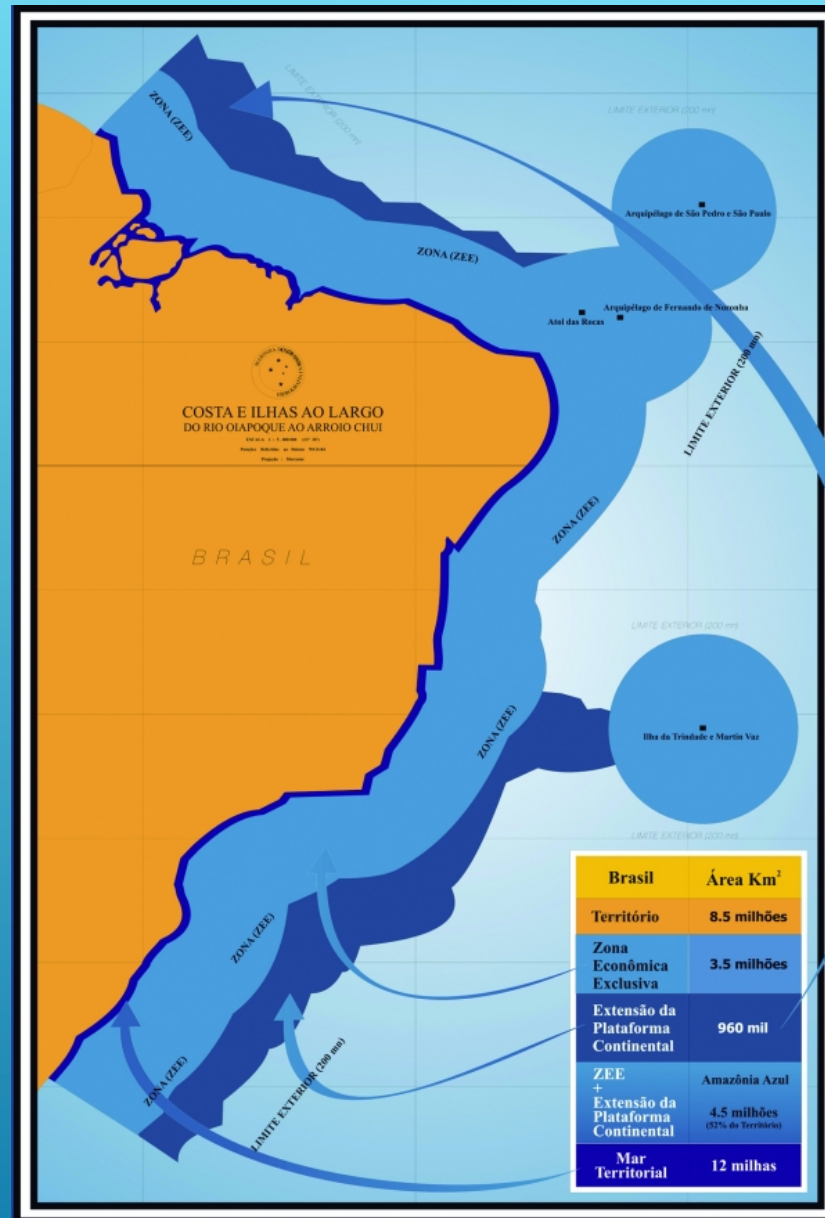
MULTIPLE BRAZILIAN SECTORAL POLICIES ... AND ZONES

Solange Teles da Silva

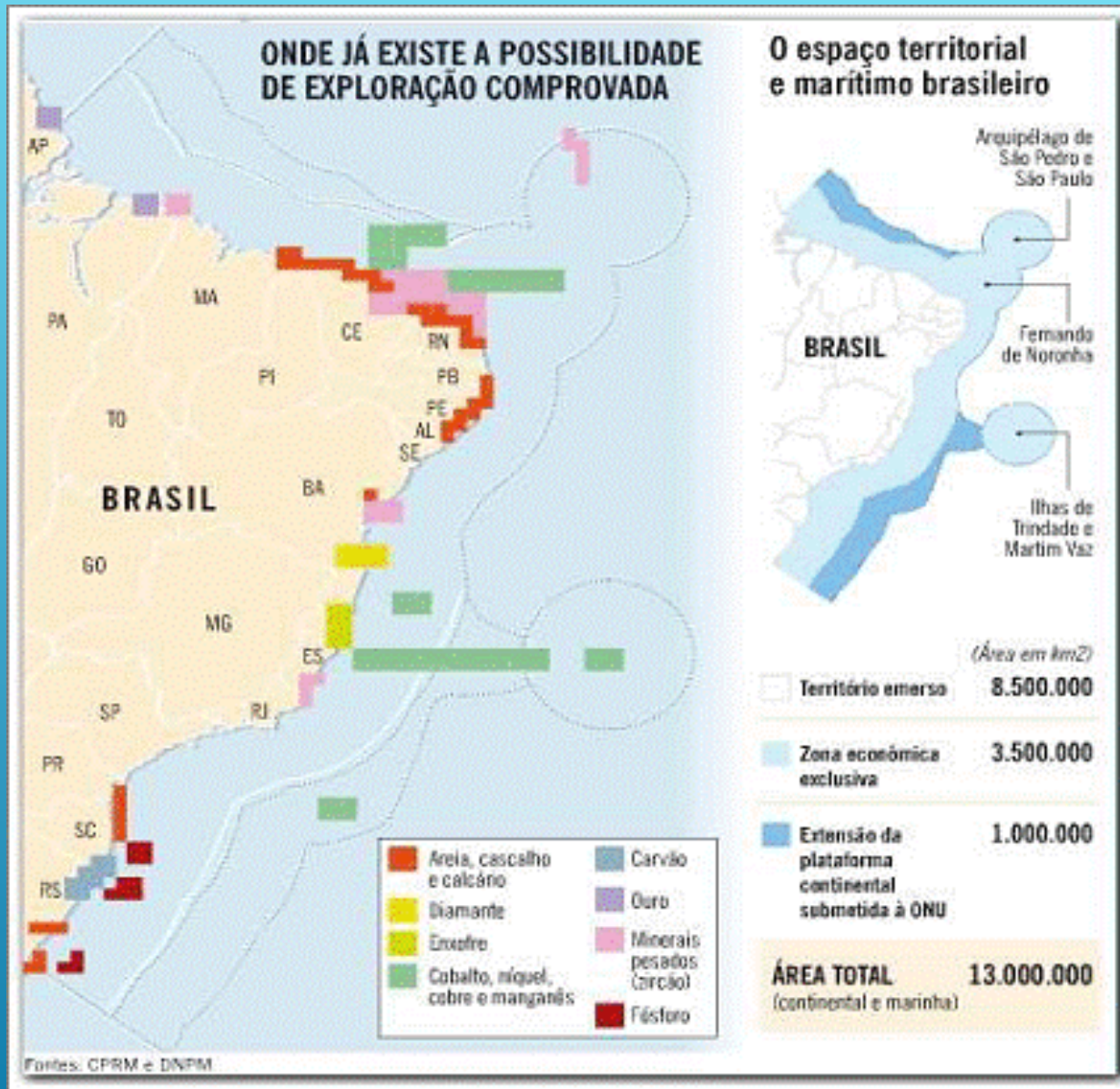
Law Professor at Mackenzie University - Researcher on
Productivity at CNPq

Coordinator of Research Project "A estratégia
brasileira de gestão sustentável dos recursos marinhos
vivos e não-vivos" (UnB, UFC e UPM), Capes

PADDLE Project

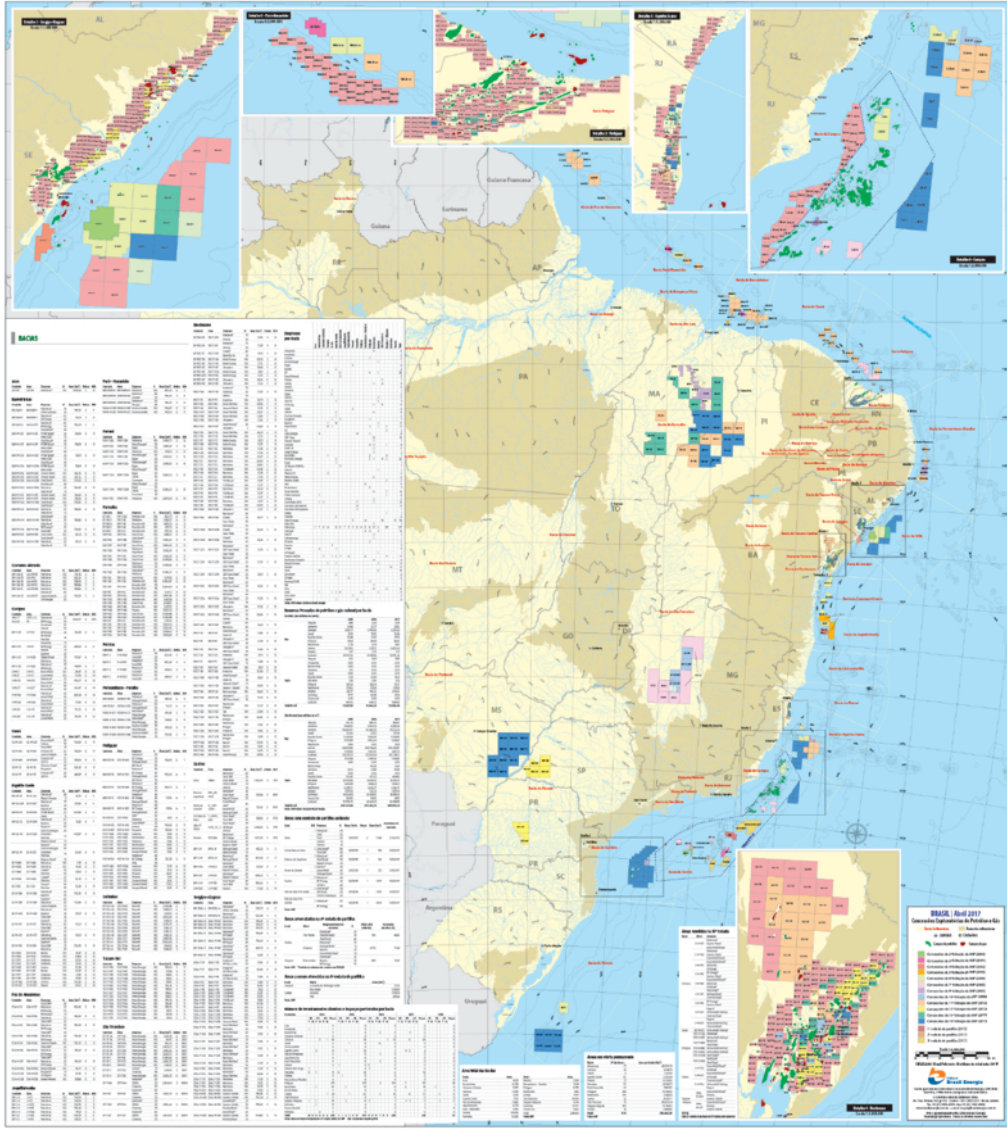


OFFICIAL MAP OF PART OF THE **BLUE AMAZON**, OFF THE EAST COAST OF BRAZIL, WHERE CONSERVATION AND RESEARCH ARE LAGGING BEHIND ECONOMIC DEVELOPMENT, MAINLY BY THE OIL INDUSTRY. CREDIT: GOVERNMENT OF BRAZIL



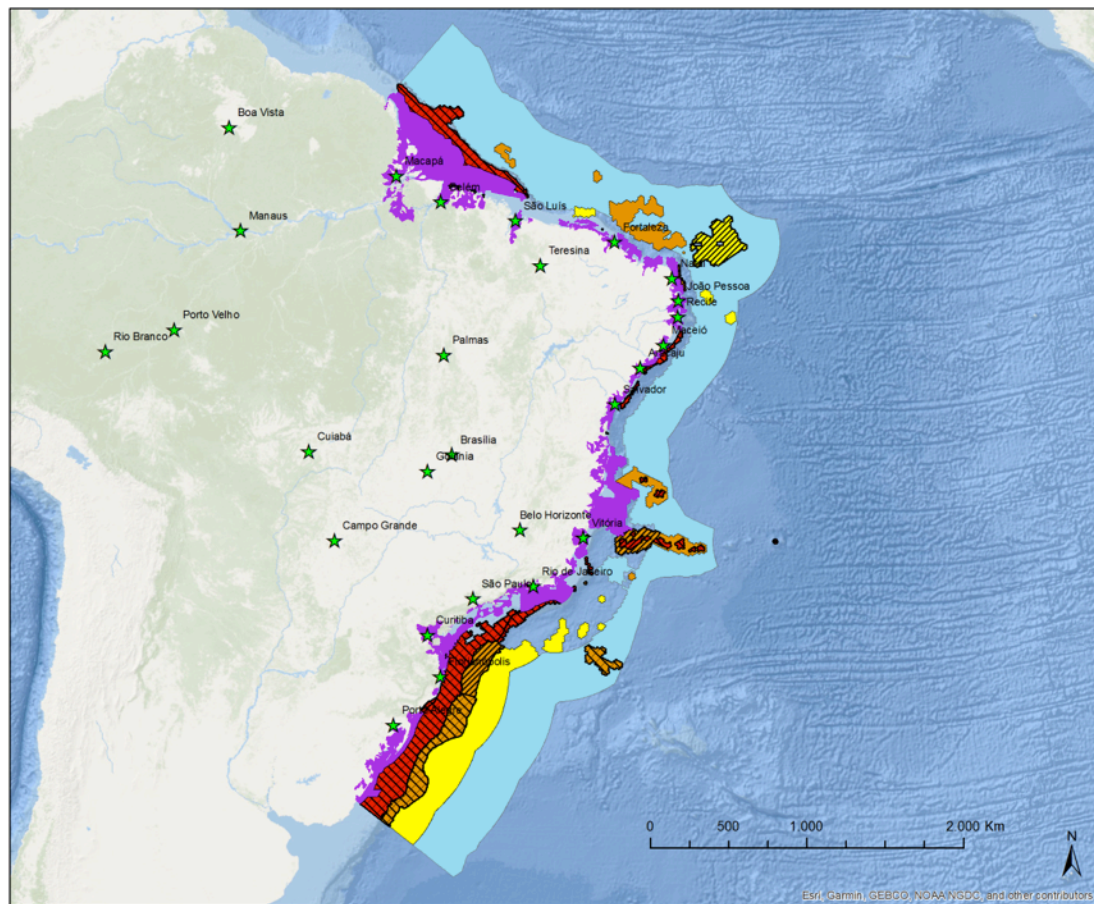
FONTE: GEOPOLÍTICA DO PETRÓLEO

Ranking por empresa



PRINCIPAIS PORTOS





ÁREAS E AÇÕES PRIORITÁRIAS PARA CONSERVAÇÃO, USO SUSTENTÁVEL E REPARTIÇÃO DOS BENEFÍCIOS DA BIODIVERSIDADE BRASILEIRA 2ª atualização

Legenda

Importância Biológica

- Extremamente Alta
- Muito Alta
- Alta
- Insuficientemente Conhecida

Prioridade de ação

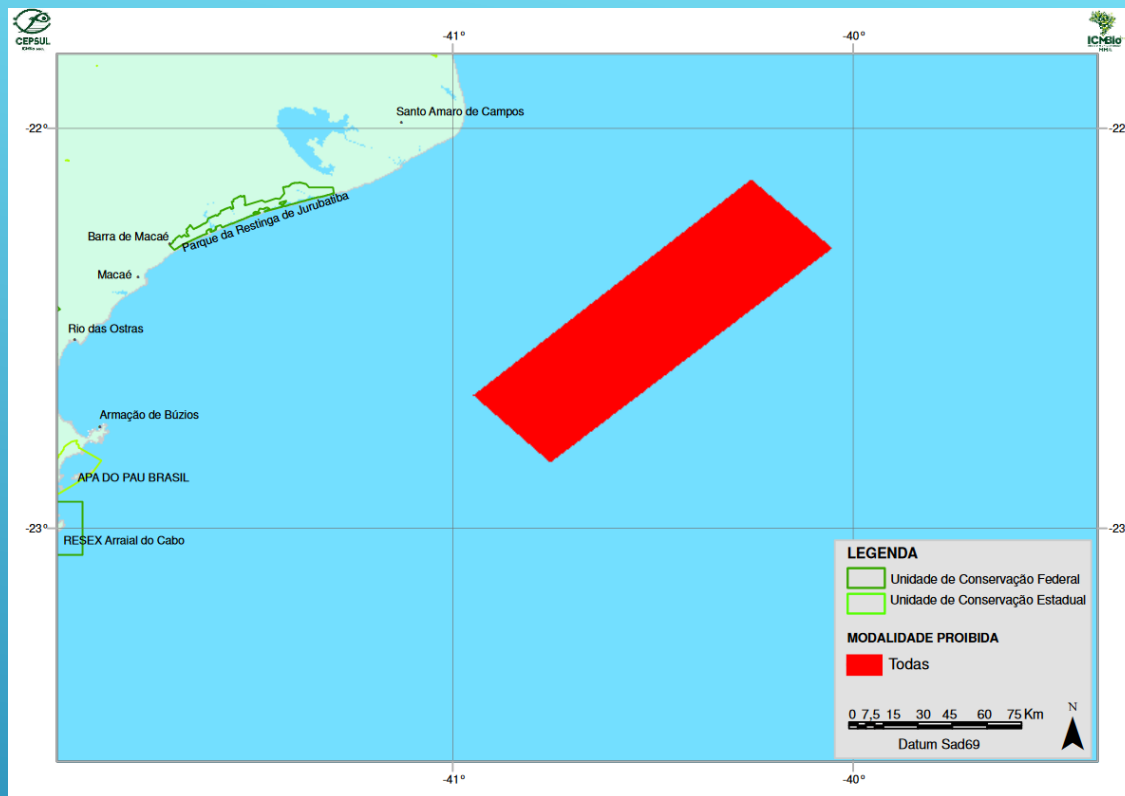
- Extremamente Alta
- Muito Alta
- Alta
- Áreas prioritárias em sobreposição nos biomas e na Zona Costeira e Marinha

Realização



Instituições parceiras





MAR TERRITORIAL, EM FRENTE À CABO FRIO – ÁREAS DE EXCLUSÃO A PESCA – TODAS AS MODALIDADES - PORTARIA SUDEPE N° N-02 DE 14/02/1980

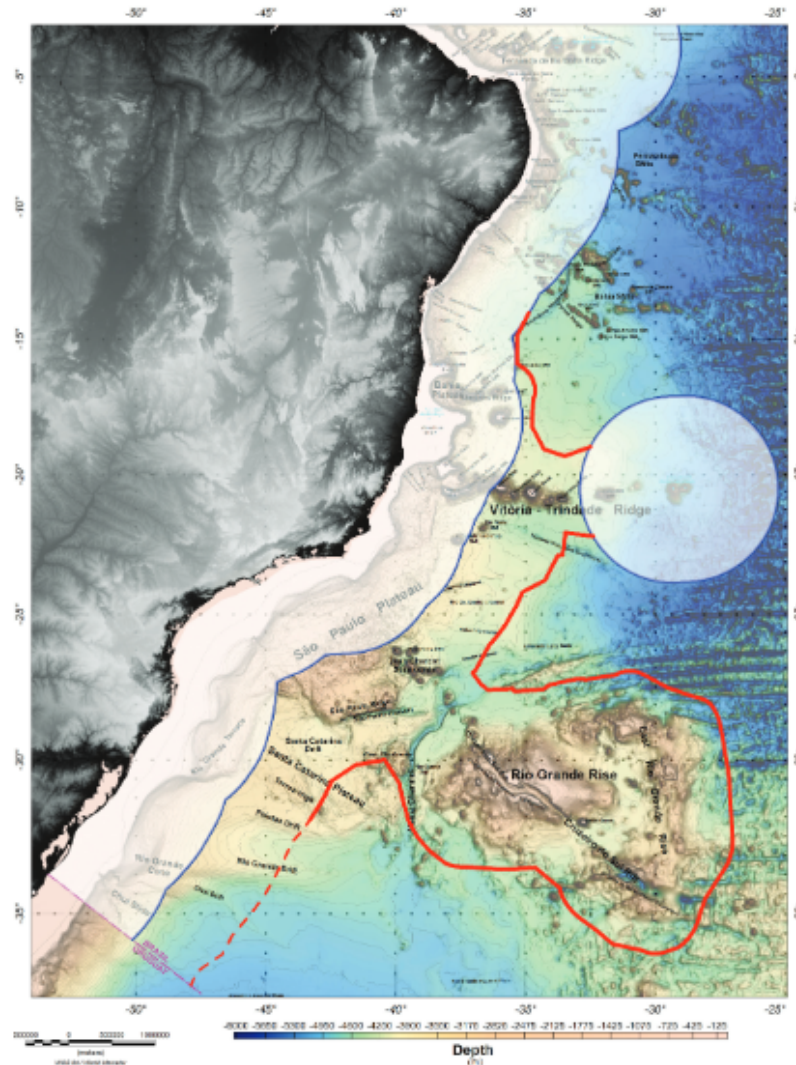


Figure 2 – The Outer Limit of the Extended Continental Shelf beyond the maritime boundary of 200 M from the baselines from which the breadth of the territorial sea is measured in the Brazilian Oriental Margin and part of the Meridional Margin. The dashed red line represents the Outer Limit according the Brazilian Partial Revised Submission - Southern Region [Brazilian Submission, 2015¹]. The magenta line represents the lateral maritime border with Uruguay and the blue line, the 200M. The prominent morphologic features, classified as components or natural prolongations of the Brazilian Continental Margin are also indicated.

Thank you!

Obrigada!

Merci !

SOLANGE.TELES@MACKENZIE.BR

