

Fisheries Zoning in Brazil

Beatrice Padovani Ferreira



UNIVERSIDADE FEDERAL DE PERNAMBUCO

DEPARTAMENTO DE OCEANOGRAFIA

Fisheries zoning in Brazil, by B. P. Ferreira,
UFPE. Paddle workshop, Recife, Brazil.

OCEAN CTG - UFPE

2019

A fisheries evolution in Brasil...

- *...from the XVII century until the beginning of the XX century the formation of several coastal communities in Brazil whose members lived mainly or partially from fishing activity ...*

Silva, 1993: Caiçaras e Jangadeiros: cultura marítima e modernização no Brasil”

Nowadays...

- According to the General Register of the Fisheries Activity (RGP) of the Ministry of Fisheries and Aquaculture (MPA), it is estimated that today there are almost one million artisanal fishers in Brazil.
- ...estimates account that approximately 45% of all the annual fish production landed comes from artisanal fishing, but it is possible that it reaches 70%



Satellite Tracking System for all Fishing Vessels above 15 meters. Smaller vessels are not tracked



Fisheries zoning in Brazil, by B. P. Ferreira, UFPE. Paddle workshop, Recife, Brazil.



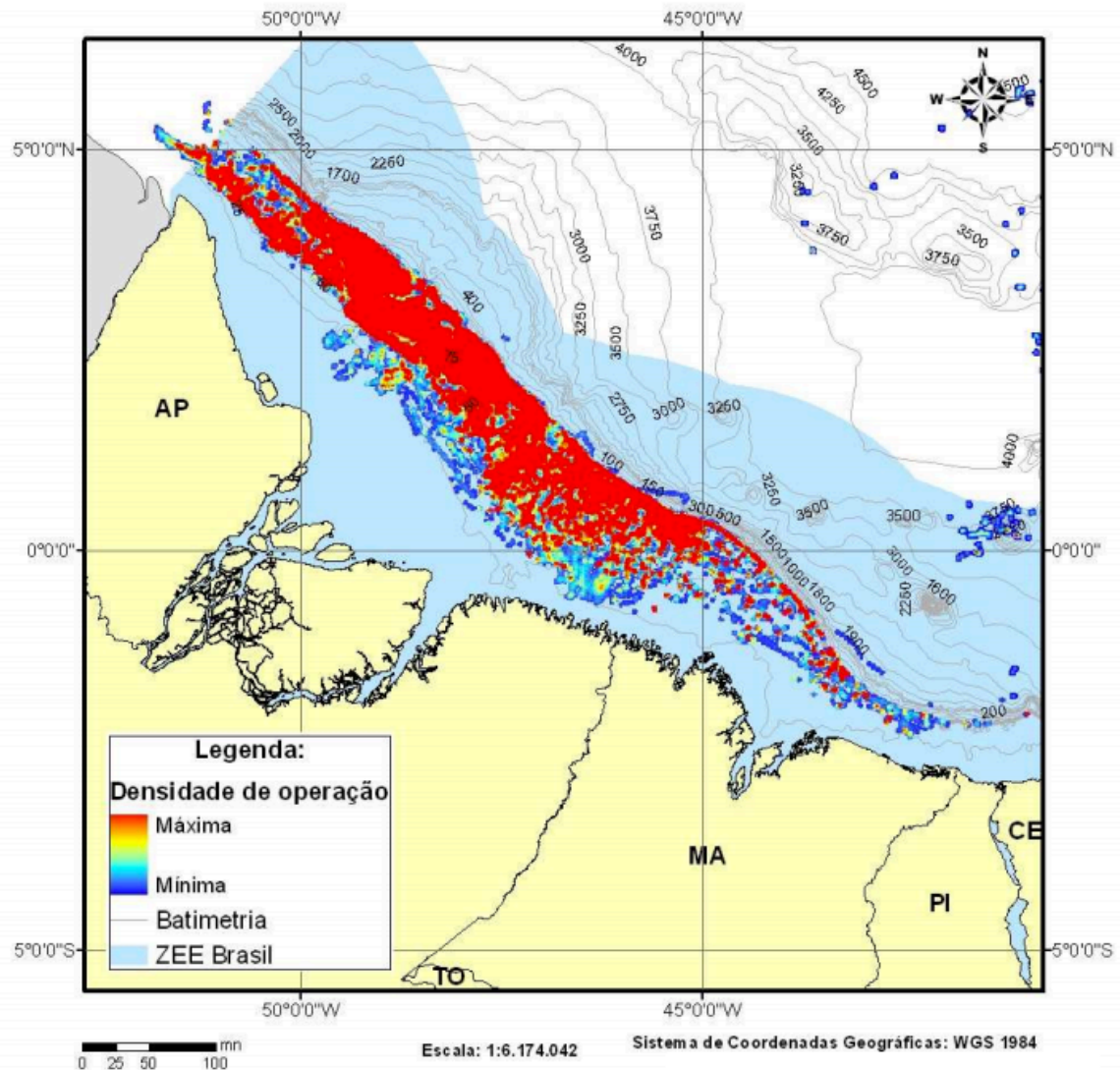
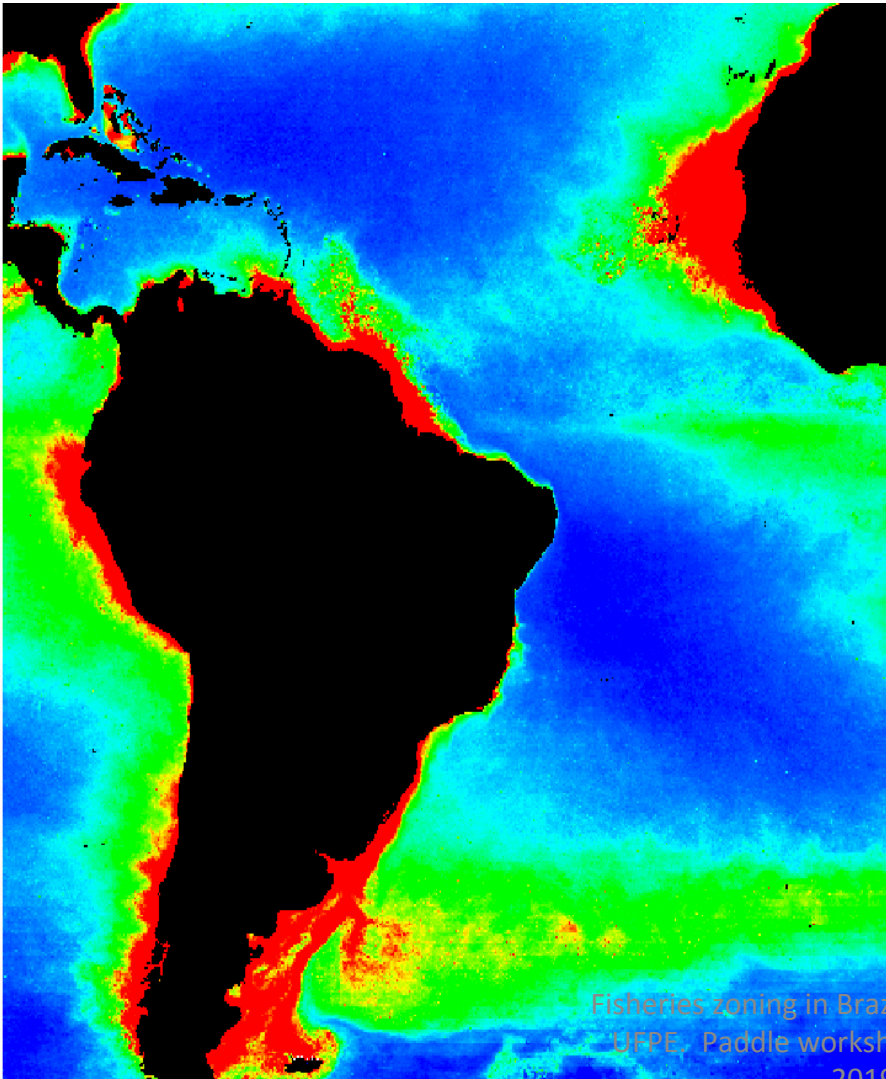


Figura 15. Densidade de pesca da frota que utiliza Petrecho Espinhel Vertical para captura de Pargo na Região Norte/Nordeste em 2010

Over the years, use zoning has been the product of different criteria, here presented not in any particular order of importance or existence, and probably not covering all processes and their interfaces...

... a framework for consideration!

The first zoning is productivity



Fisheries zoning in Brazil, by B. P. Ferreira,
UFPE, Paddle workshop, Recife, Brazil.

The second zoning is size and mobility



Fisheries zoning in Brazil, by B. P. Ferreira,
UFPE. Paddle workshop, Recife, Brazil.

2019

650

1590

39

44

40

660
1000

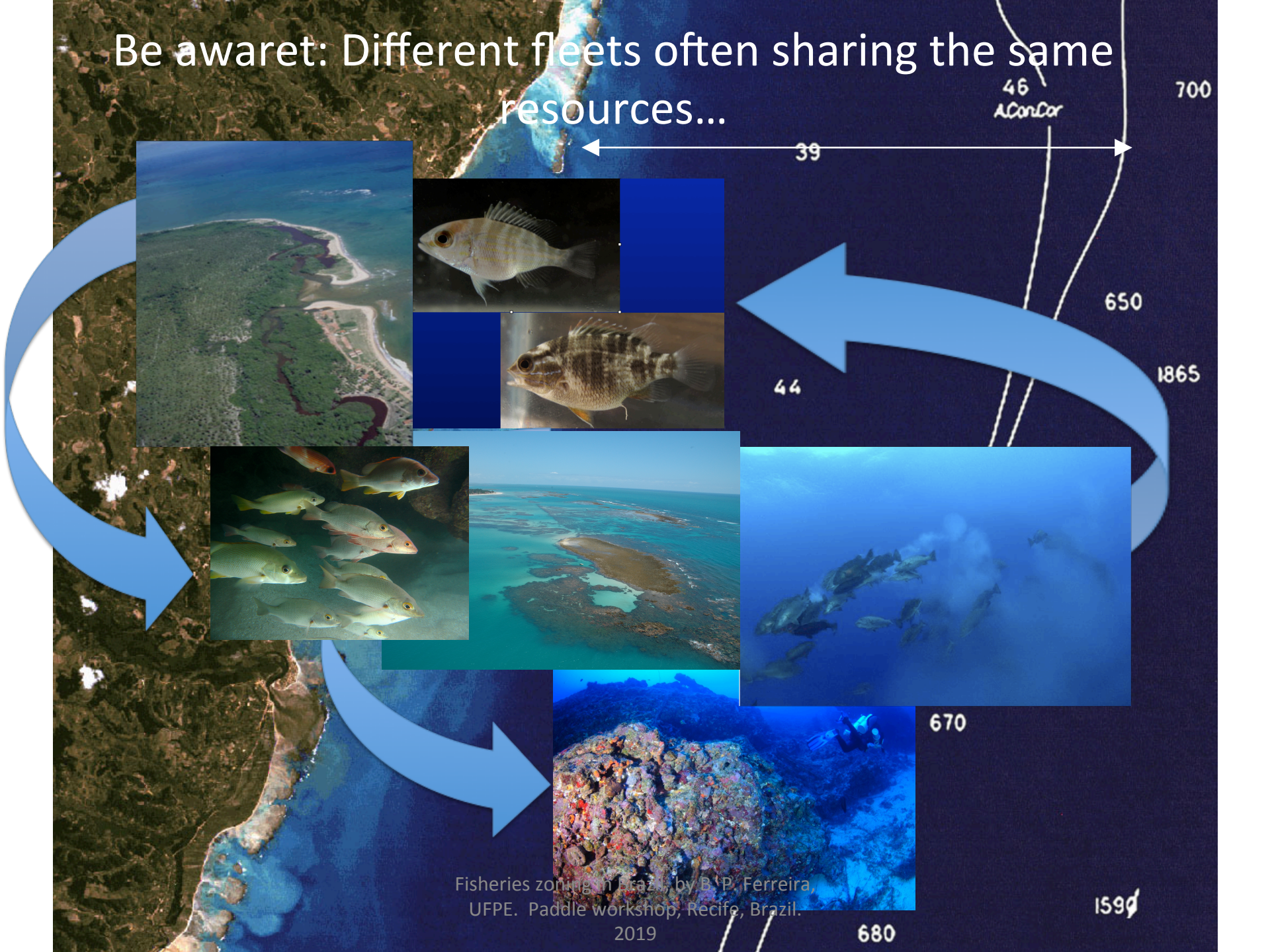
650

1865

680

42
ConCor

Be aware: Different fleets often sharing the same resources...



Fisheries zoning in Brazil, by B. P. Ferreira, UFPE. Paddle workshop, Recife, Brazil.

2019

680

1590

Laws to separate fleet areas and gear types: 12 miles as state limit?

Legislação aprovada no Rio Grande do Sul prejudica pescadores catarinenses

Na prática, os limites para arrasto passam de três milhas náuticas para 12, o equivalente a 22, quilômetros

EVERTON PALAORO, PALHOÇA
23/08/2018 08H42 - ATUALIZADO EM 23/08/2018 ÀS 09H45

🐦 f ...

A recém aprovada Política Estadual da Pesca do Rio Grande do Sul pode afetar diretamente as embarcações pesqueiras de Santa Catarina. Na prática, os limites para arrasto passam de três milhas náuticas para 12, o equivalente a 22, quilômetros. Os pescadores catarinenses acreditam que a essa distância não haverá peixes e camarões, já que eles ficam mais perto da costa. A medida pode impactar uma frota de 100 barcos, que emprega 700 trabalhadores, causando prejuízo de R\$ 480 milhões anualmente.



Foto: Divulgação

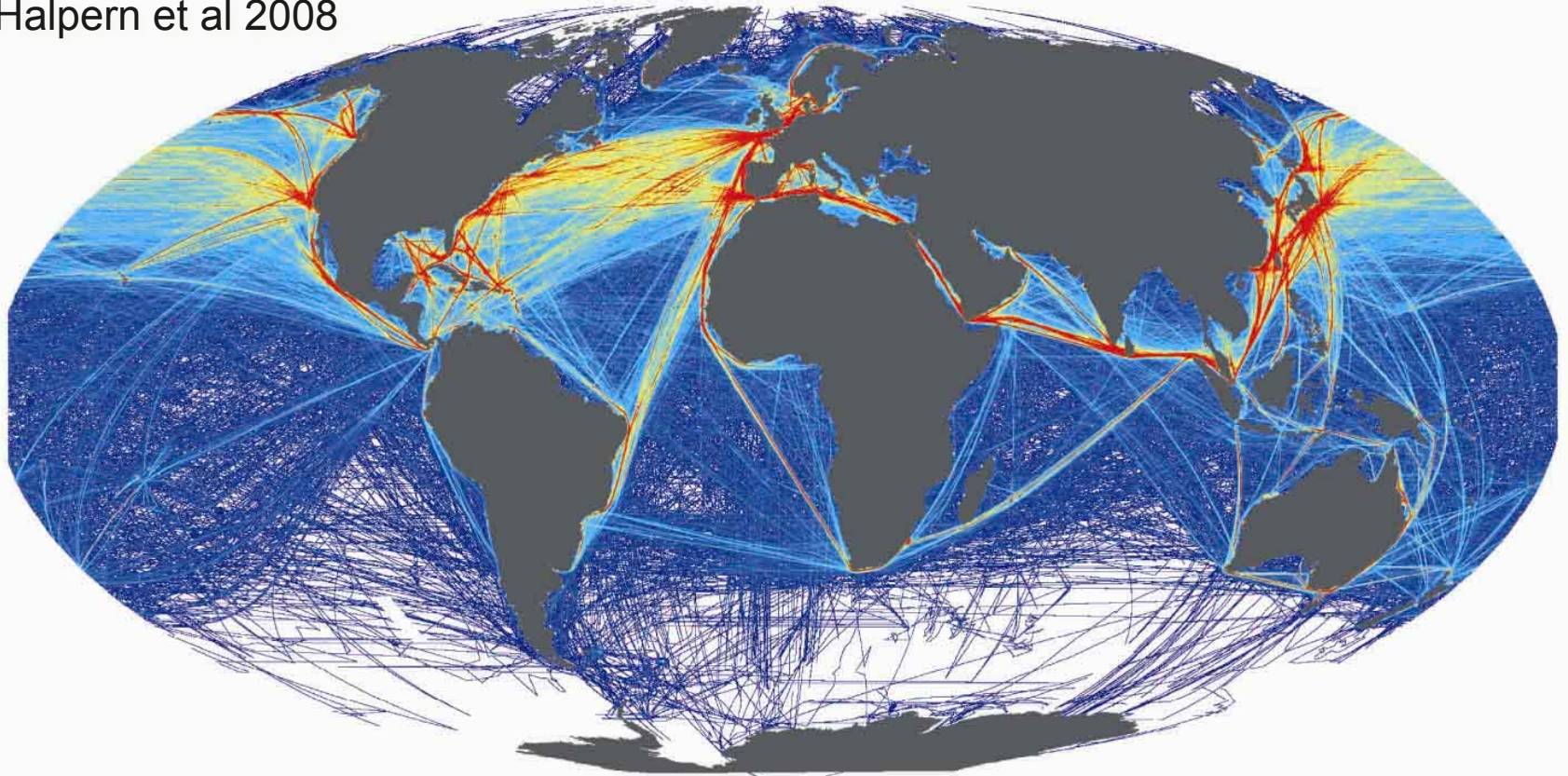
29/10/2018

O governo federal vai intervir no decreto de regulamentação da lei estadual que proíbe a pesca de arrasto no Rio Grande do Sul

Fisheries zoning in Brazil, by B. P. Ferreira,
UFPE. Paddle workshop, Recife, Brazil.

The Third zoning is risk

(Halpern et al 2008)

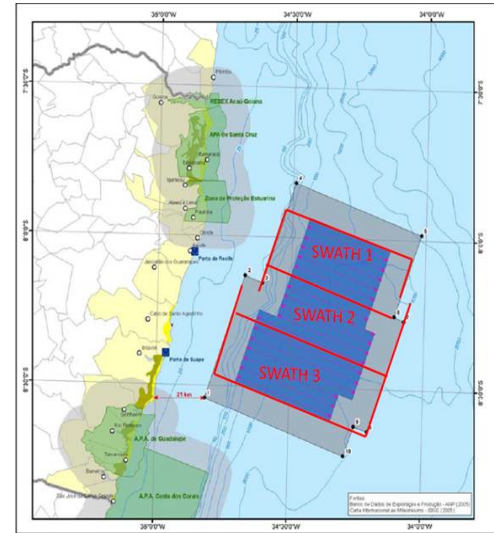




Fisheries zoning in Brazil, by B. P. Ferreira,
UFPE. Paddle workshop, Recife, Brazil
2019

Foto: Alberto Santos

The Fourth zoning is perceived priority: energy production



Fisheries zoning in Brazil, by B. P. Ferreira,
UFPE. Paddle workshop, Recife, Brazil.

PRIMs: Impact Reduction Plan

- Sectorial approach
- Sensitive Areas Report
- Recommendations and mitigating measures
- Evaluation and Monitoring Protocols
- Main industries: oil, hydroelectric plants, roads, windmills, etc.



Figura 3. Áreas Simuladas de espécies ameaçadas relacionadas a aeroportos regionais.

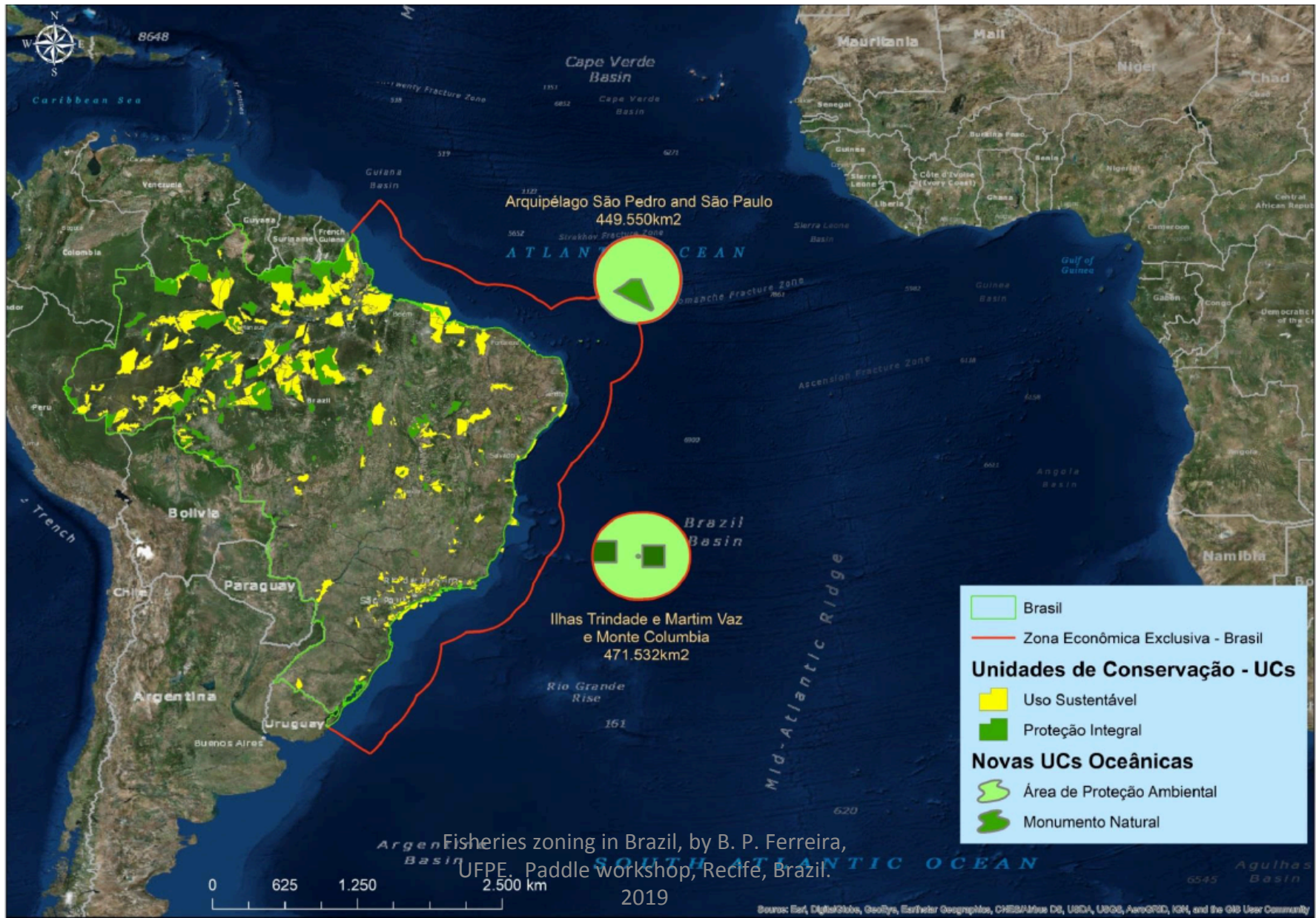
Fisheries zoning in Brazil, by B. P. Ferreira,
UFPE. Paddle workshop, Recife, Brazil.

The Fifth zoning is revenue and access to representation

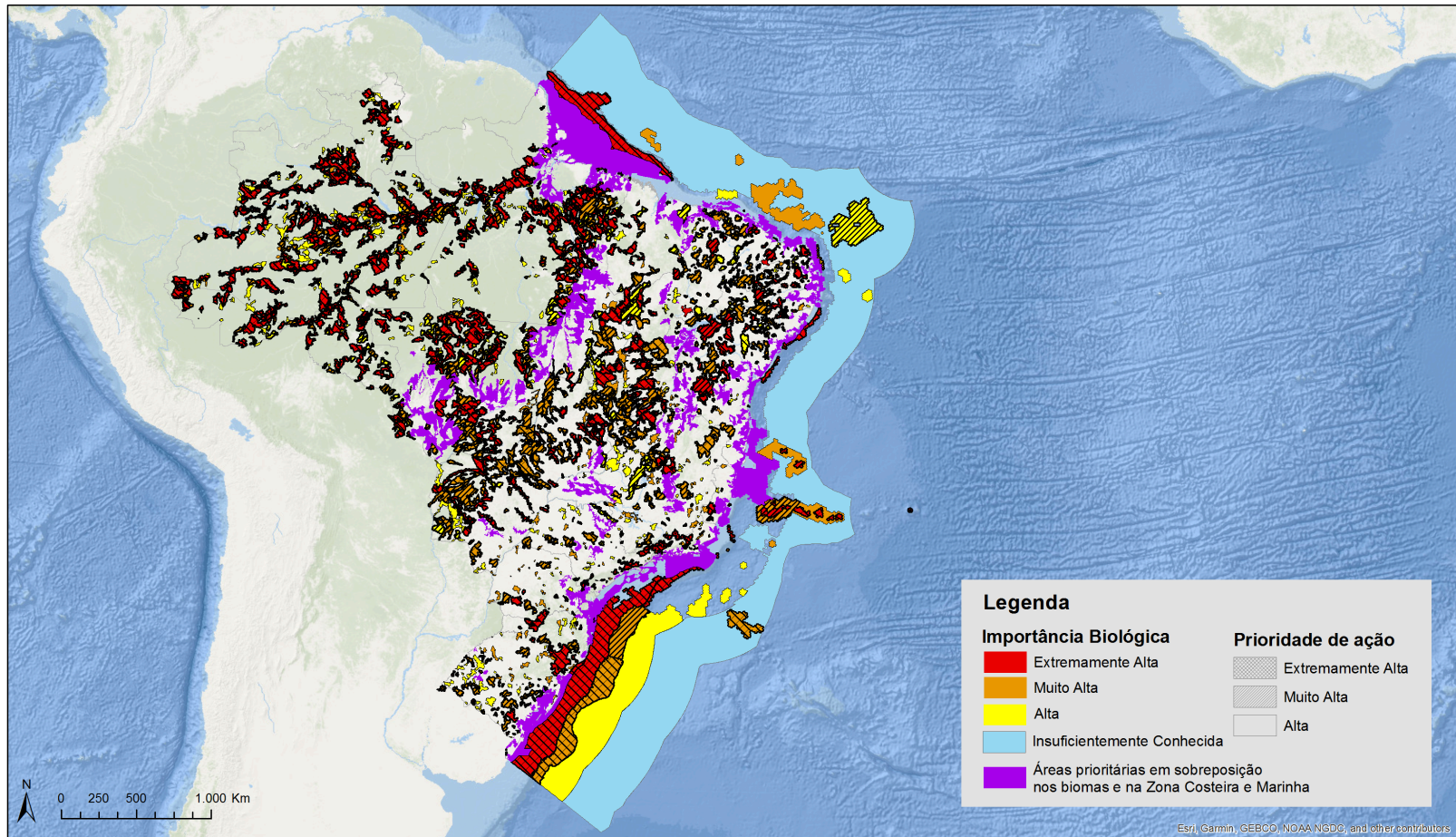


Fisheries zoning in Brazil, by B. P. Ferreira,
UFPE. Paddle workshop, Recife, Brazil.

The Sixth zoning is conservation: MPAs



PRIORITY AREAS AND ACTIONS FOR CONSERVATION – MINISTRY OF ENVIRONMENT 2018.



ÁREAS E AÇÕES PRIORITÁRIAS PARA CONSERVAÇÃO, USO SUSTENTÁVEL E REPARTIÇÃO DOS BENEFÍCIOS DA BIODIVERSIDADE BRASILEIRA 2ª atualização

Realização

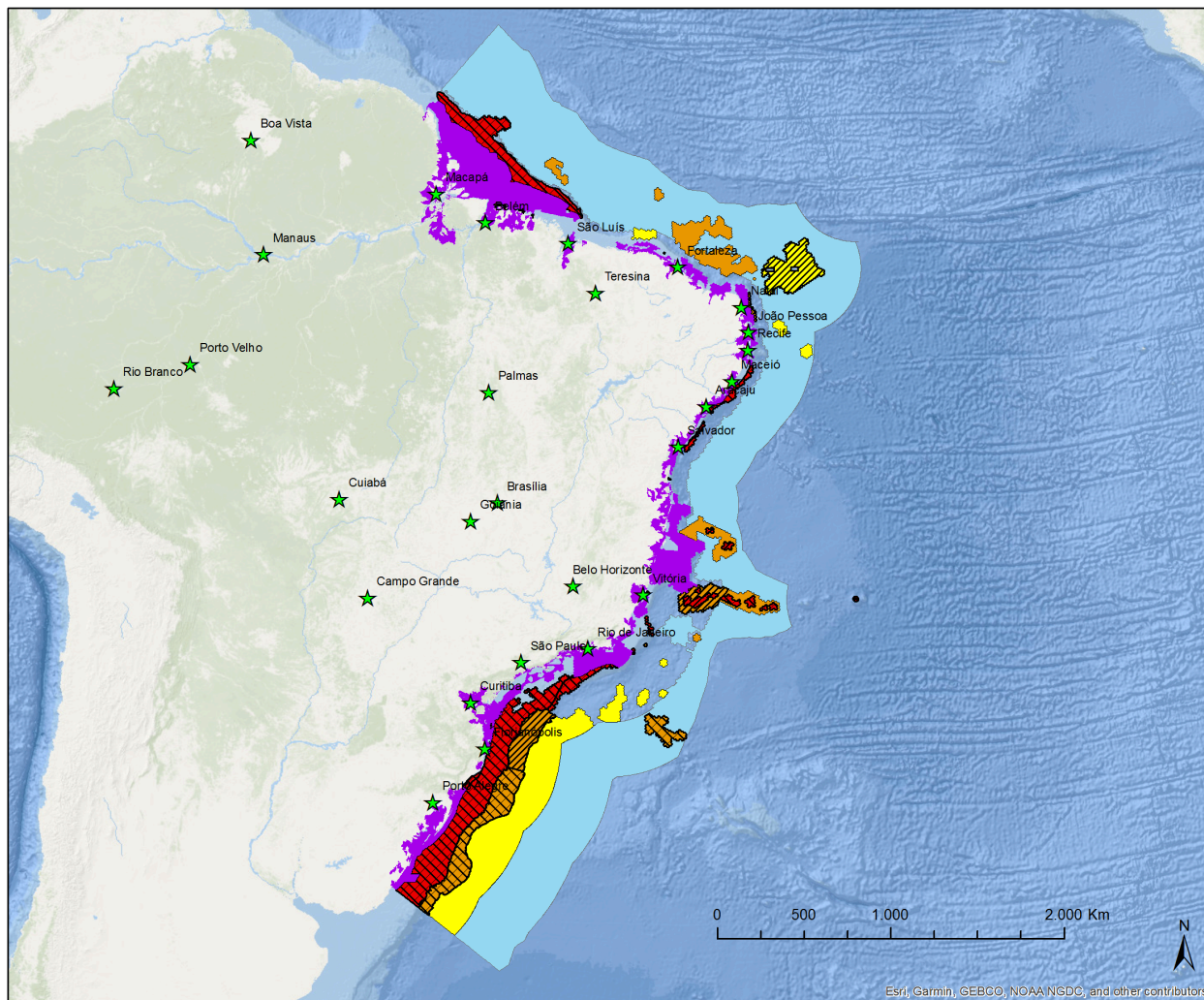


Instituições parceiras



Fisheries zoning in Brazil, by B. P. Ferreira,
UFPE. Paddle workshop, Recife, Brazil.
2019

PRIORITY AREAS AND ACTIONS FOR CONSERVATION – MINISTRY OF ENVIRONMENT 2018.



ÁREAS E AÇÕES PRIORITÁRIAS PARA CONSERVAÇÃO, USO SUSTENTÁVEL E REPARTIÇÃO DOS BENEFÍCIOS DA BIODIVERSIDADE BRASILEIRA 2ª atualização

Legenda

Importância Biológica

- Extremamente Alta
- Muito Alta
- Alta
- Insuficientemente Conhecida
- Áreas prioritárias em sobreposição nos biomas e na Zona Costeira e Marinha

Prioridade de ação

- Extremamente Alta
- Muito Alta
- Alta

Realização



Instituições parceiras



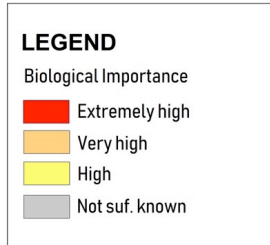
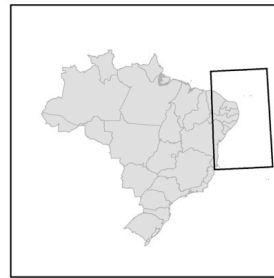
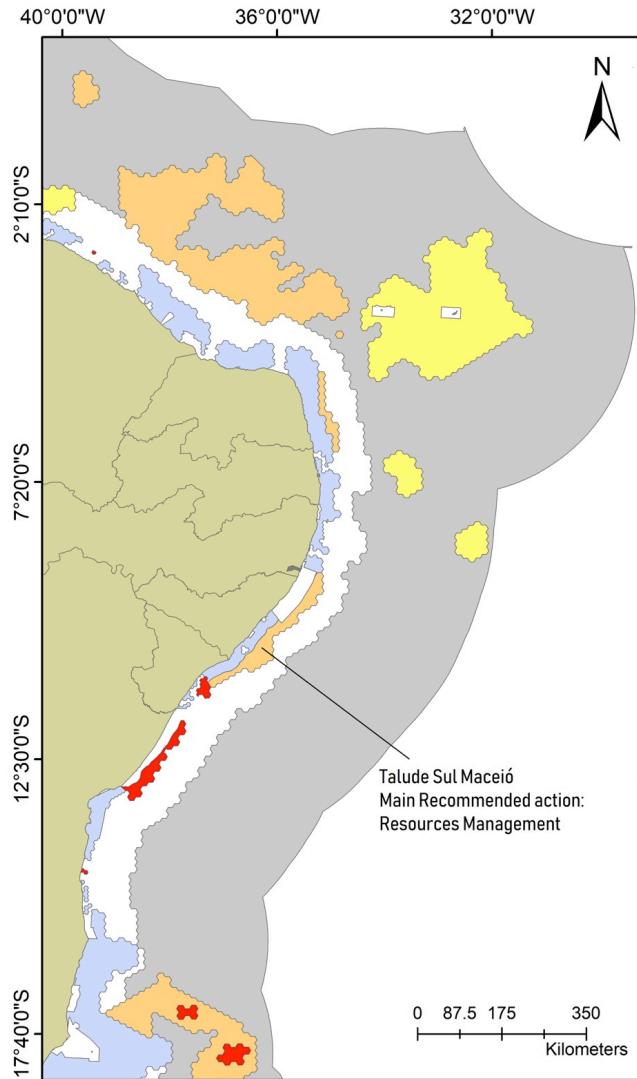
Fisheries zoning in Brazil, by B. P. Ferreira,

UFRPE, Universidade Federal de Pernambuco, Recife, Brazil

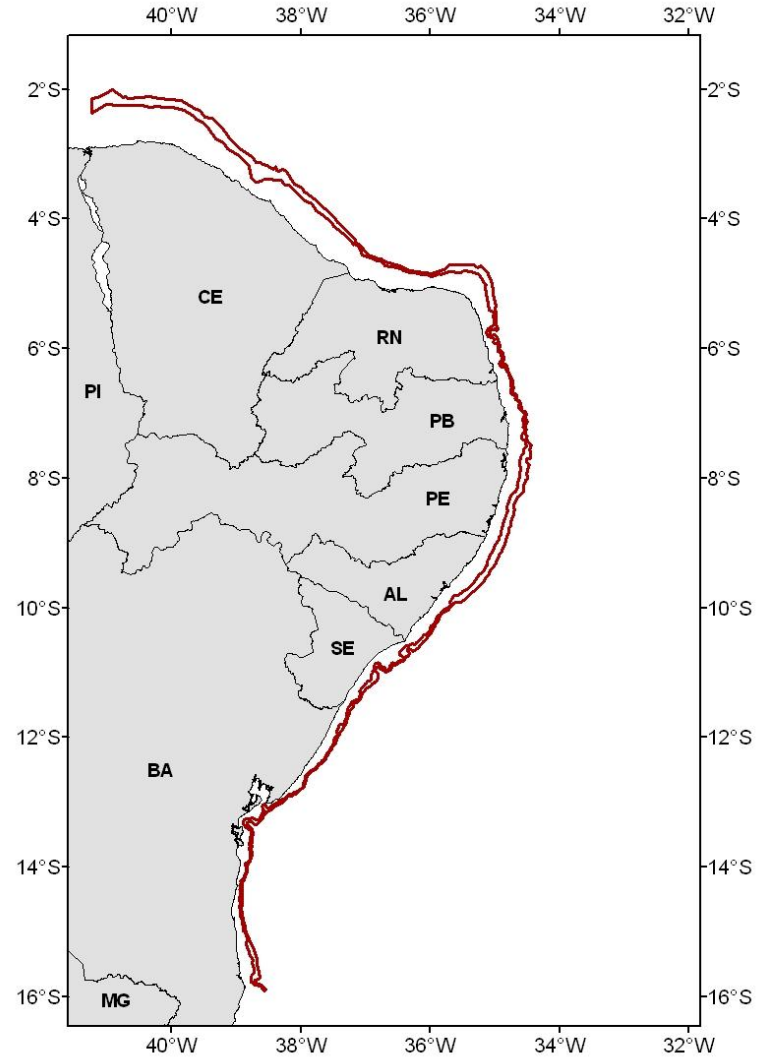
2019



Priority Areas



EBSA - CDB



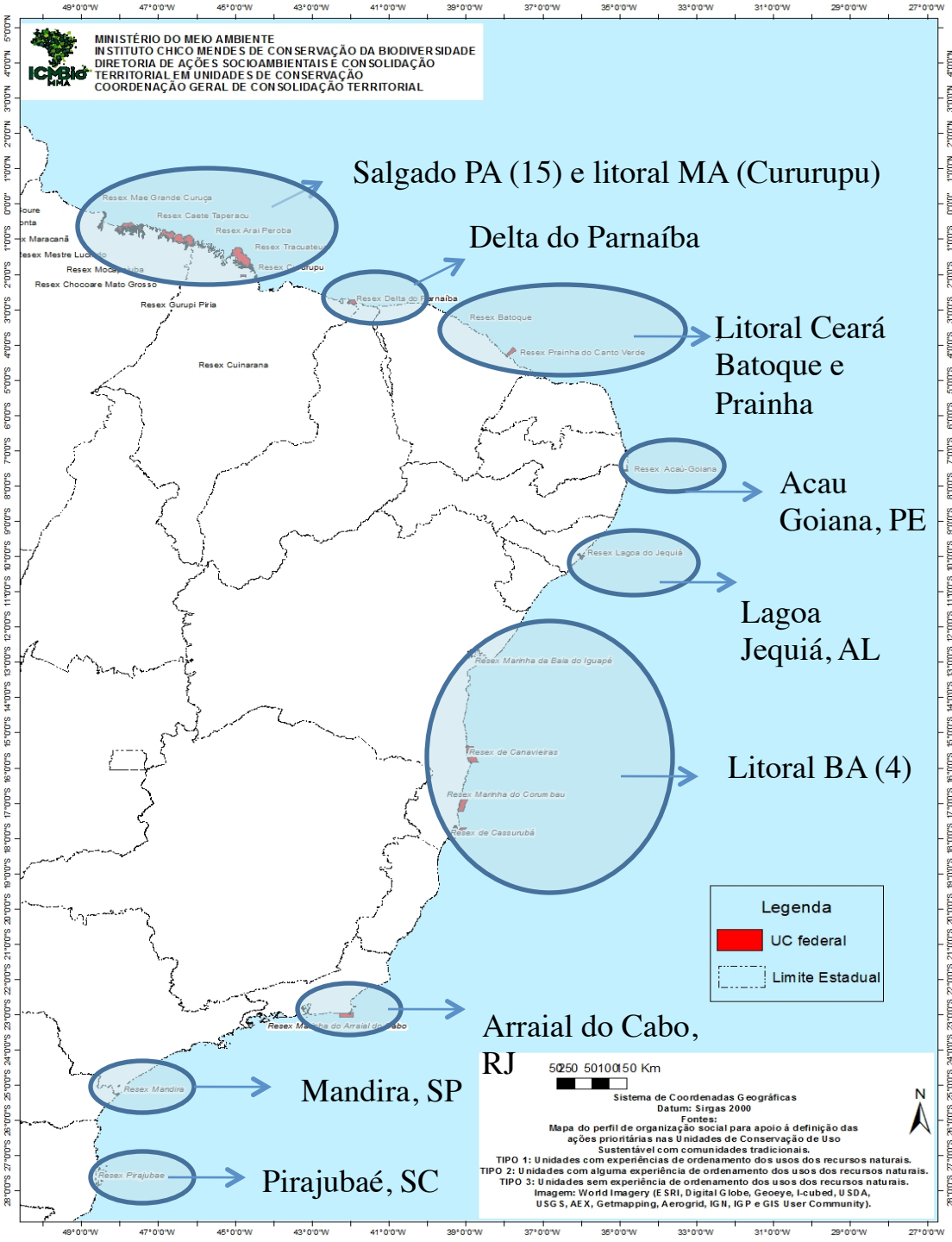
Fisheries zoning in Brazil, by B. P. Ferreira,
 UFPE. Paddle workshop, Recife, Brazil.

The Seventh zoning is traditional user right: a movement seeking to guarantee access to territory as everywhere may mean nowhere...





MINISTÉRIO DO MEIO AMBIENTE
 INSTITUTO CHICO MENDES DE CONSERVAÇÃO DA BIODIVERSIDADE
 DIRETORIA DE AÇÕES SOCIOAMBIENTAIS E CONSOLIDAÇÃO
 TERRITORIAL EM UNIDADES DE CONSERVAÇÃO
 COORDENAÇÃO GERAL DE CONSOLIDAÇÃO TERRITORIAL



Salgado PA (15) e litoral MA (Cururu)

Delta do Parnaíba

Litoral Ceará
 Batoque e Prainha

Acaú
 Goiana, PE

Lagoa
 Jequiá, AL

Litoral BA (4)

Arraial do Cabo,
 RJ

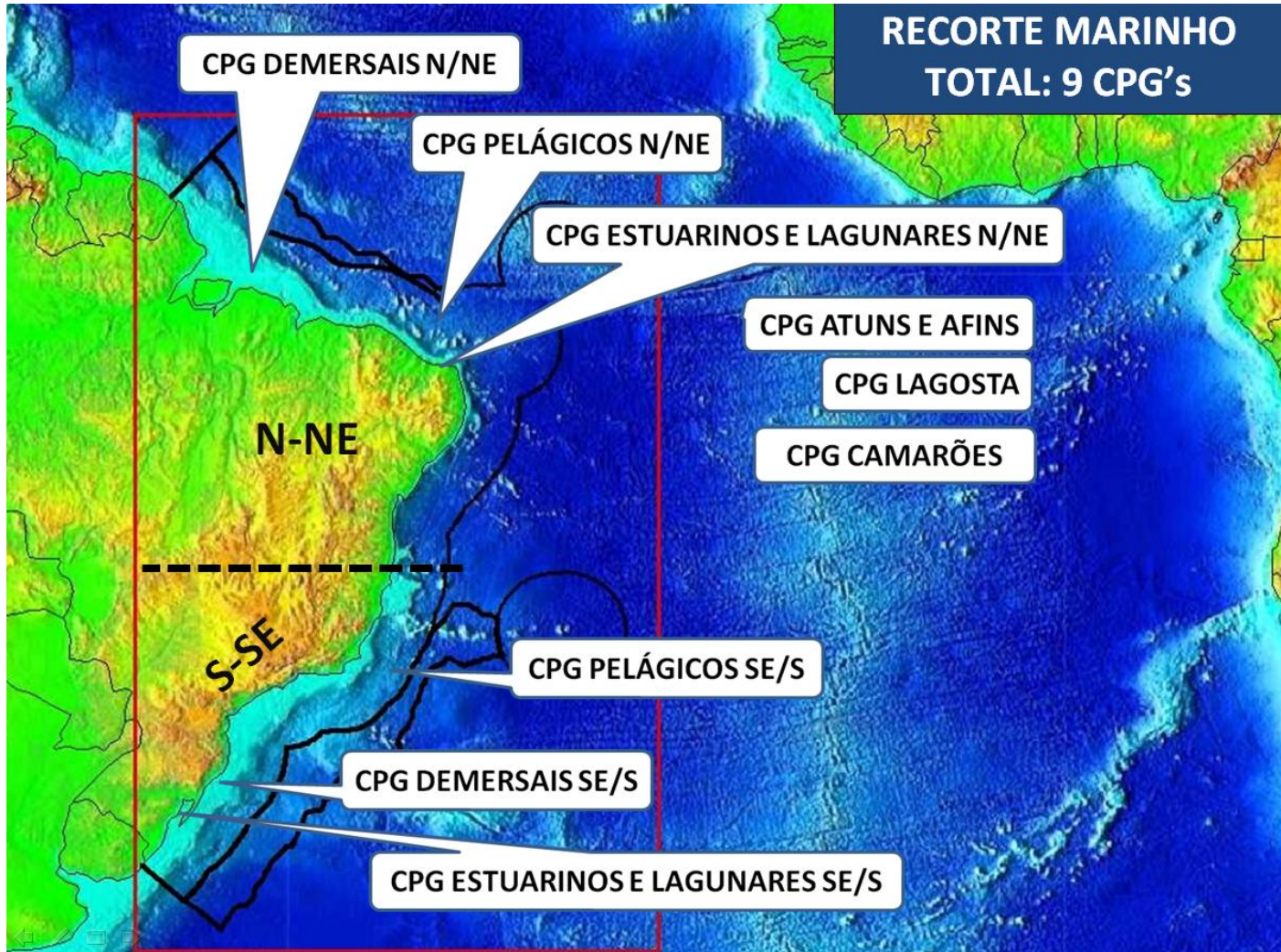
Mandira, SP

Pirajubaé, SC

**Traditional users
 right arrangements
 in place:**

**Marine Extractive
 Reserves
 -Fisheries Agreements
 -TAUS
 -...others?**

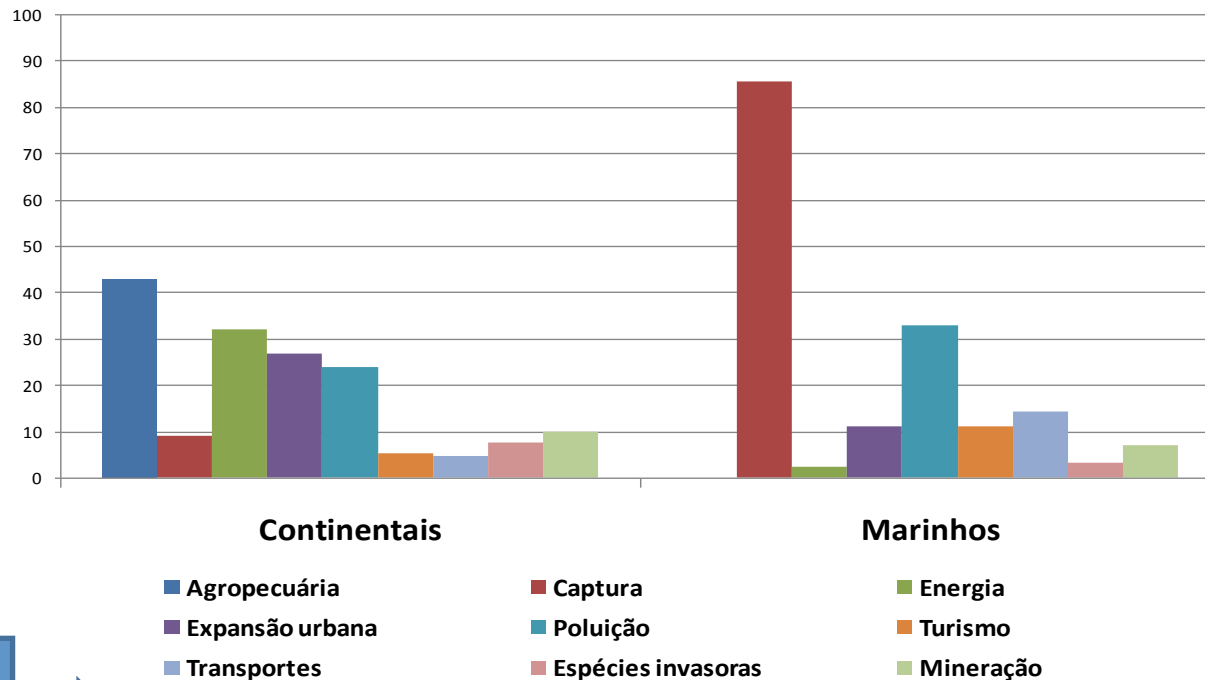
Contry Management Structure: The CPGs Permanent Management Comitees divided by resource and region



Fisheries zoning in Brazil, by B. P. Ferreira,
UFPE. Paddle workshop, Recife, Brazil.

2019

Portaria 445/14 Red list of threatened species : recovery plans to be implemented only under in areas under special spatial arrangements



*Management collapse
Cumulative Impacts
Need for special arrangement- legal basis*

Other state laws of zoning

- State APAs – limits
- State fisheries code and comitees (Rio Grande, São Paulo, Pernambuco)
- ...

Thank you!

- beatrice@ufpe.br

