

# Producing the eLTER site catalogue

Guidance on checking your site page and providing  
the required site information on DEIMS

Alessandra Pugnetti  
([alessandra.pugnetti@ismar.cnr.it](mailto:alessandra.pugnetti@ismar.cnr.it))

Andy Sier ([arjs@ceh.ac.uk](mailto:arjs@ceh.ac.uk))

WP5

# Introduction

The eLTER site catalogue is a product of the eLTER H2020 project (WP5, deliverable 5.2). It will be a visually attractive and informative document that we can use to help explain what LTER-Europe is, and what the network's sites can offer end users. It will include a selection of sites (the transnational access and virtual access sites proposed by project members).

The catalogue will serve as a marketing aid, promoting the sites, the DEIMS database and the European LTER network as a whole. We can distribute it both online and in hard copy format at key European and global events to promote European LTER. A sister product, the final eLTER project brochure will include more information about other aspects and achievements of the project.

In order to produce a high quality product, we need the help and support of the site managers responsible for the sites included in the catalogue.

Draft site pages have been produced and we now need site managers to check them carefully and update DEIMS where necessary. This document is designed to help site managers to check their site page and improve it where necessary.

## Where to find site pages

All draft site catalogue pages are available on NextCloud:

[https://docs.umweltbundesamt.at/s/T81qkC1x7OEm0pR?  
path=%2FStakeholders%20and%20Communcation](https://docs.umweltbundesamt.at/s/T81qkC1x7OEm0pR?path=%2FStakeholders%20and%20Communcation)

Password: 0Chocolate0

There is one file per country. Within each file, the sites are arranged alphabetically by the site name. If cannot find your site, please let us know. To our knowledge, we have produced a site page for each TA and VA site (155 sites in total).

## What to do now

Please check your site page, using this document as a guide. If there are issues with your site, such as missing information, text that is too short or too long, missing images, etc., please update your site's record on DEIMS before March 11th. If you have any questions, please contact Alessandra Pugnetti ([alessandra.pugnetti@ismar.cnr.it](mailto:alessandra.pugnetti@ismar.cnr.it)).

Please note that the site pages were produced based on an export of DEIMS data made in March 2017. If you have updated your site since then your site catalogue page and the information on DEIMS may not match exactly.

# A typical site page – 1

This is a good example of a catalogue site page. All the elements are included and there is just the right amount of text

Hungary

## KISKUN LTER

### HIGHLY HETEROGENEOUS LAND ON KISKUNSAĞ SAND RIDGE

The study area of KISKUN LTER is the Kiskunság Sand Ridge and its periphery, 14000 km<sup>2</sup> altogether, 17% of the area of Hungary. The primarily sandy area is extremely heterogeneous. It consists of arable lands, planted forests, meadows, abandoned fields, settlements, alkaline lakes, wetlands, and species rich remnants of forest steppe. It is also very varying in time: ploughing and setting aside, extensive plantation of alien trees, drainage, wild fires, biological invasions, and fast demographic movements have been happening in the last 100 years, and beyond all those, the area is particularly sensitive to the climate change.

### Purpose of site

#### MAINLY OBSERVATION PARTLY EXPERIMENTATION

KISKUN LTER aims to study the living environment, to detect and monitor its changes, to understand and model the underlying causes and mechanisms, and to use the knowledge acquired to help preserving the biodiversity and associated ecosystem services. The major actor behind the changes is the human being, the the quality of the changed living environment impact the quality of the human life. We study the living environment and its ecological processes embedded into the social and economical environment. Major topics: organization and structure of the sand grassland; climate change simulation field experiment on sand grassland; spontaneous regeneration of vegetation after agricultural field abandonment and fire; recent changes in ecosystem services due to changes of water availability; restoration of high diversity vegetation.

Two good photos of the site



Location: Central and northern part of Bács-Kiskun county and southern part of Pest county. Its centre is 100 km SSE of Budapest.

Ecosystems: Agricultural; Temperate broadleaf and mixed forests; Temperate grasslands, savannas, and shrublands; Small lakes

Research topics: conservation; terrestrial ecology; population ecology; plant ecology; community ecology; successional dynamics; community dynamics; ecosystem ecology; ecosystem function; aquatic ecology; lake ecology; environmental science; land use history; limnology; meteorology; social sciences  
Contact(s): Miklós Kertész, MTA Centre for Ecological Research

All parts of site accessible: No

All yr | 4WD | 2WD | 4WD | Boat | Beds | SR |  
T: <10m | °C | Power: Cent | 1-5kW | Data: Int | Data: Ext

### Web links

- <http://www.kiskun.lter.hu/en>

Ideally, the description and purpose should occupy the left column only ...

... and right column should contain these other site details

# A typical site page – 2

From which DEIMS fields do the data come from?

The image shows a screenshot of a DEIMS site page for 'KISKUN LTER'. Several callout boxes point to specific fields on the page:

- Country:** Hungary
- Site name:** KISKUN LTER
- Catalogue one line description:** Points to the 'HIGHLY HETEROGENEOUS LAND ON KISKUNSA'G SAND RIDGE' section.
- Observation design:** Points to the 'Purpose of site' section.
- Experimentation design:** Points to the 'MAINLY OBSERVATION' and 'PARTLY EXPERIMENTATION' sections.
- Uploaded images (Images field):** Points to a circular image of a landscape with trees and a person, labeled 'LTER\_EU\_HU\_003'.
- Site code:** LTER\_EU\_HU\_003
- See next page for these fields:** A blue arrow points to the 'All parts of site accessible: No' and 'Web links' sections.

**Text from the page:**

**Country:** Hungary

**Site name:** KISKUN LTER

**Highly heterogeneous land on Kiskunság Sand Ridge**

The study area of KIKSUN LTER is the Kiskunság Sand Ridge and its periphery, 14000 km<sup>2</sup> altogether, 17% of the area of Hungary. The primary vegetation is highly heterogeneous. It consists of alkaline steppes of various types, including: halophytes, halophilous plants, and halophilous animals. The vegetation is highly heterogeneous. It consists of alkaline steppes of various types, including: halophytes, halophilous plants, and halophilous animals.

**Purpose of site**

**MAINLY OBSERVATION**  
**PARTLY EXPERIMENTATION**

KISKUN LTER aims to study the living environment, to detect and monitor its changes, to understand and model the underlying causes and mechanisms, and to use the knowledge acquired to help preserving the biodiversity and associated ecosystem services. The main research topics are: the impact of land use changes on the living environment, the impact of land use changes on the living environment, the impact of land use changes on the living environment.

**Web links**

- <http://www.kiskun.lter.hu/en>

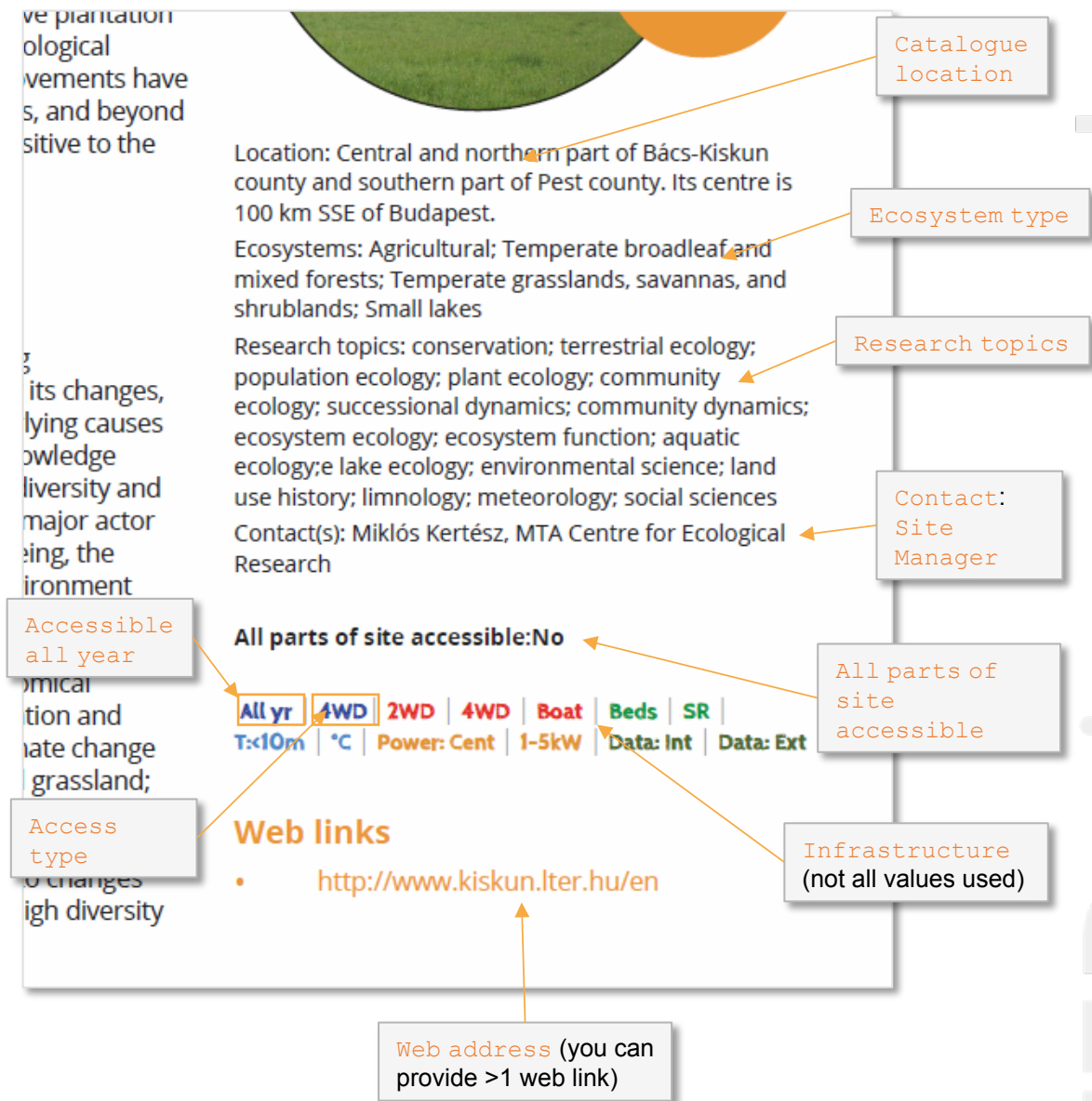
**Metadata:**

All parts of site accessible: No

All yr | 4WD | 2WD | 4WD | Boat | Beds | SR | T:<10m | °C | Power: Cent | 1-5kW | Data: Int | Data: Ext

## A typical site page – 3

From which DEIMS fields do the data come from?



# Checking your site page – 1

If this one line description is missing add it at  
[Project related forms > Catalogue one line description](#)

Are you happy with the images chosen? If not, upload new ones to DEIMS and tell Andy Sier which ones to use. See later for more information

Are you happy with the description? Does it follow the DEIMS guidelines? If not make edits. See later for more information.

Do the site name and site code match up?

Are you happy with the purpose? Does it follow the DEIMS guidelines? If not make edits. See later for more information

Are these correct? Do they make logical sense when read together? If not, edit  
[Focus, design and scale of site > Observation Design and Experimentation Design](#)

See next page for these fields

Hungary

## KISKUN LTER

HIGHLY HETEROGENEOUS LAND ON KISKUNSAAG SAND RIDGE

The study area of KIKSUN LTER is the Kiskunság Sand Ridge and its periphery, 14000 km<sup>2</sup> altogether, 17% of the area of Hungary. The primarily sandy area is extremely heterogeneo... It consists of arable lands, planted forests, meadows, abandoned fields, settlements, alk... ds, and species rich remnants of ... e. It is also very varying in time: ... and setting aside, extensive plantation ... , drainage, wild fires, biological ... and fast demographic movements have ... ing in the last 100 years, and beyond ... area is particularly sensitive to the ... ge.

**Purpose of site**

MAINLY OBSERVATION  
PARTLY EXPERIMENTATION

KISKUN LTER aims to study the living environment, to detect and monitor its changes, to understand and model the underlying causes and mechanisms, and to use the knowledge acquired to help preserving the associated ecosystem services. Behind the changes is the human impact on the quality of the changed landscape, the quality of the human environment and its effects on the social and economic life. Major topics: the sand grassland field experiment, the regeneration of vegetation after agricultural field abandonment and fire; recent changes in ecosystem services due to changes of water availability; restoration of high diversity vegetation.

Location: Central and northern part of Bács-Kiskun county and southern part of Pest county. Its centre is 100 km SSE of Budapest.

Ecosystems: Agricultural; Temperate broadleaf and mixed forests; Temperate grasslands, savannas, and shrublands; Small lakes


Research topics: conservation; terrestrial ecology; population ecology; plant ecology; community ecology; successional dynamics; community dynamics

Site accessible: No

2WD | 4WD | Boat | Beds | SR | Power: Cent | 1-5kW | Data: Int | Data: Ext

**Web links**

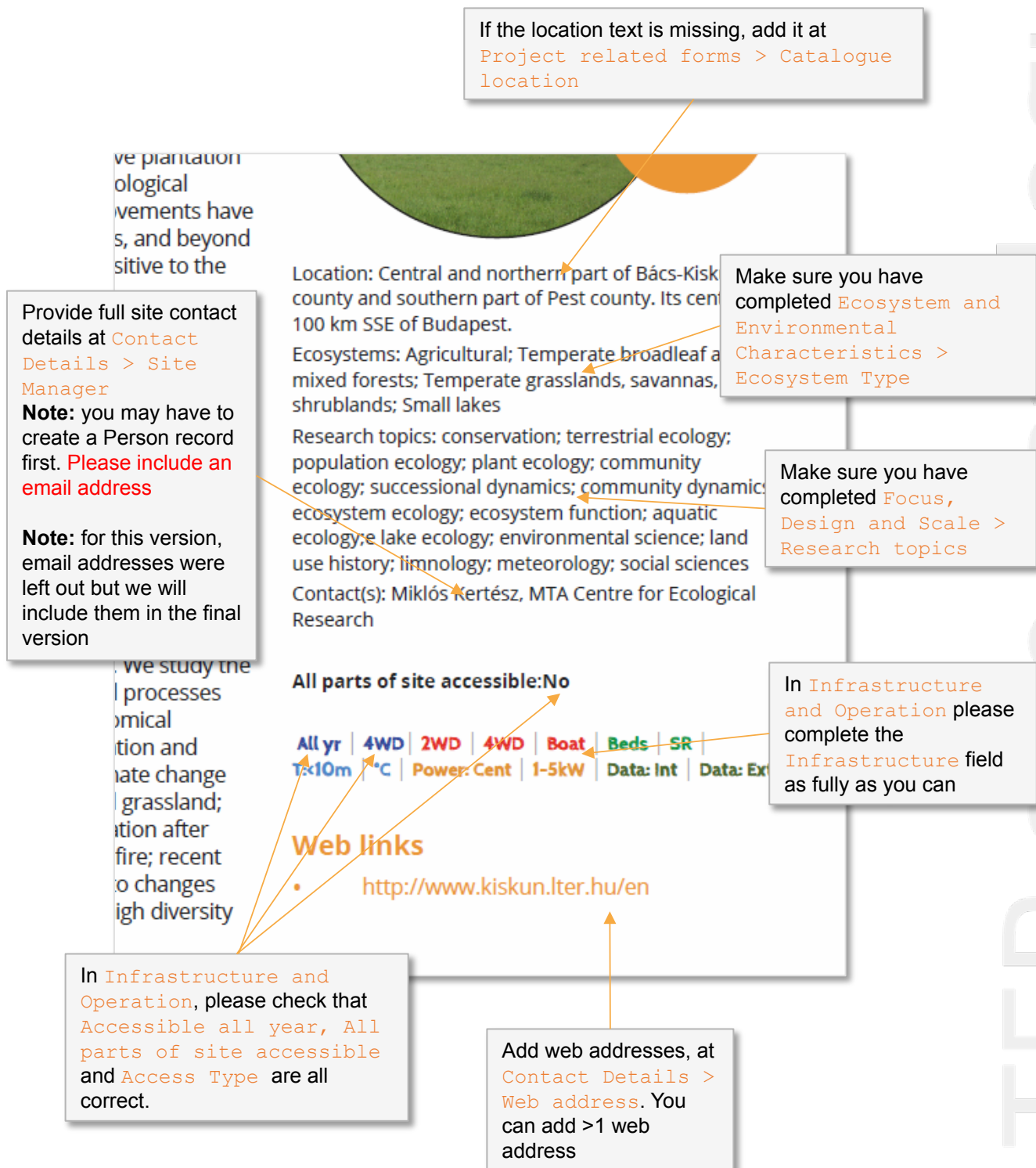
- <http://www.kiskun.lter.hu/en>



LTER\_EU\_HU\_003



## Checking your site page – 2



# Site description and purpose

Because page space is limited, we have set character limits for the description and purpose text:

Description max. 1500 characters

Purpose max. 900 characters

These limits include the spaces!

If the existing text in [General Site Description](#) and [Purpose of Site](#) is within these limits, we can use it.

If the text is too long, you have two options:

1. Edit the text in the above fields so that it is shorter

or

2. Leave those fields as they are and provide specific text for use in the catalogue.

Choose option 2 if you want there to be longer text on the DEIMS website.

To provide specific text for the catalogue, go to [Project related forms](#) and fill in:

[Catalogue description](#)

and

[Catalogue purpose](#)

These fields have character limits sets.

## Notes

1. when we create your site page, we will **always** use [Catalogue Description](#) and [Catalogue Purpose](#) if they are filled in
2. Please avoid using bulleted or numbered lists in these fields. Regular paragraphs are better.

Hungary

## KISKUN LTER

### HIGHLY HETEROGENEOUS LAND ON KISKUNSAĞ SAND RIDGE

The study area of KISKUN LTER is the Kiskunság Sand Ridge and its periphery, 14000 km<sup>2</sup> altogether, 17% of the area of Hungary. The primarily sandy area is extremely heterogeneous. It consists of arable lands, planted forests, meadows, abandoned fields, settlements, alkaline lakes, wetlands, and species rich remnants of forest steppe. It is also very varying in time: ploughing and setting aside, extensive plantation of alien trees, drainage, wild fires, biological invasions, and fast demographic movements have been happening in the last 100 years, and beyond all those, the area is particularly sensitive to the climate change.

### Purpose of site

#### MAINLY OBSERVATION PARTLY EXPERIMENTATION

KISKUN LTER aims to study the living environment, to detect and monitor its changes, to understand and model the underlying causes and mechanisms, and to use the knowledge acquired to help preserving the biodiversity and associated ecosystem services. The major actor behind the changes is the human being, the the quality of the changed living environment impact the quality of the human life. We study the living environment and its ecological processes embedded into the social and economical environment. Major topics: organization and structure of the sand grassland; climate change simulation field experiment on sand grassland; spontaneous regeneration of vegetation after agricultural field abandonment and fire; recent changes in ecosystem services due to changes of water availability; restoration of high diversity vegetation.



Location: Cen  
county and so  
100 km SSE o  
Ecosystems: A  
mixed forests  
shrublands; S  
Research topi  
population ec  
ecology; succ  
ecosystem ec  
ecology; e lake  
use history; li  
Contact(s): Mi  
Research

All parts of s

All yr | 4WD  
T:<10m | °C |

Web link

• http:

eLTER - Draft site ca



## Site photos

There is space for two images for each site, one main one and one smaller one. We take these images from DEIMS.

**Why does my site page not have any pictures?** This is probably because we couldn't find a suitable image for the site. Maps and data plots are not suitable; good quality single photographs are. Some sites have provided photo montages but we can't easily use these. See below for example of images that we can't use in the catalogue.

We need high quality image because we will print copies of the catalogue. Low quality images don't look good on a page!



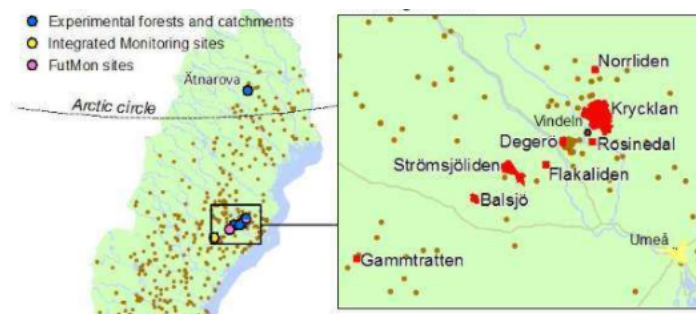
So, to be sure your site is nicely illustrated please **upload 2 or more photos of your site**. They must be:

- **Good quality**, that is sharp, clear, colourful and interesting
- **Large size**. A 100 mm x 100 mm square photo at 300 dpi would be fine.

Note that images you upload to DEIMS can be up to 10 Mb in size. Please upload the largest size you can.

In DEIMS you add images at [Name and General Description > Images](#).

We won't use maps like this ...



... or montages like this in the catalogue. But remember, you can add up to 10 images per site to DEIMS and we only need two for the catalogue.

## Site coordinates

We will include a map of all the sites included in the catalogue so please check that the site coordinates given in DEIMS are correct (see [Geographic location > Coordinates](#))